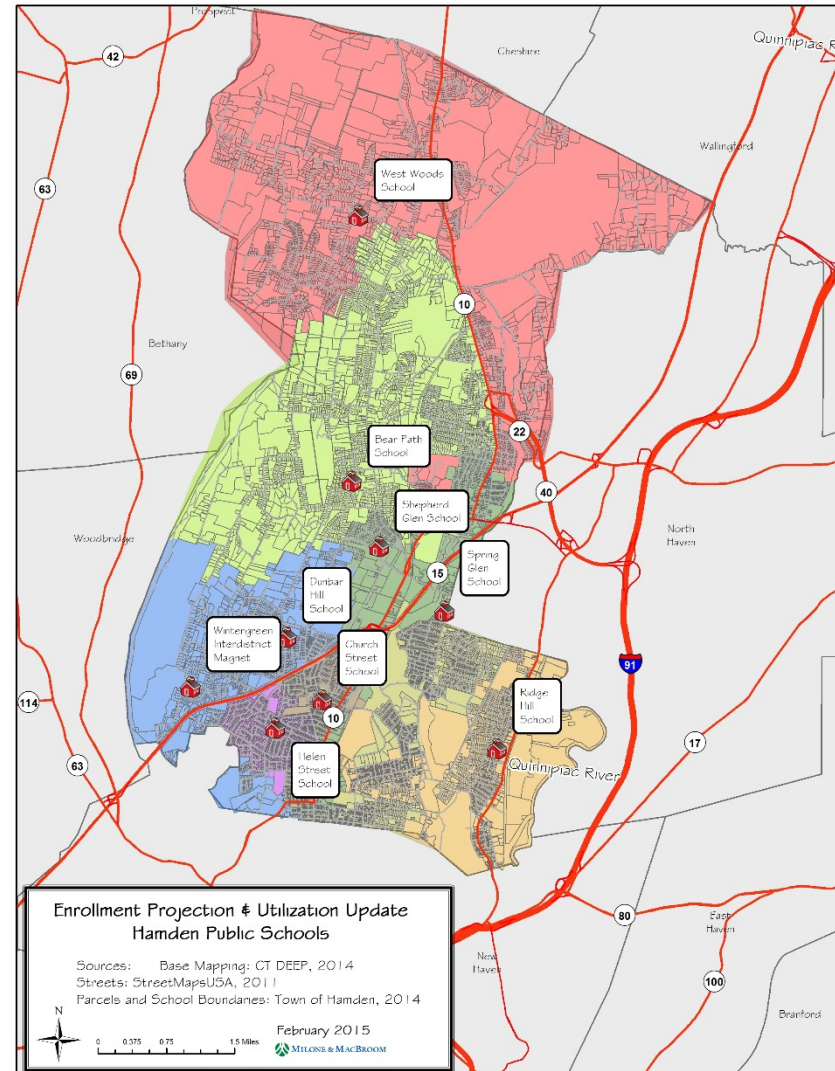


Hamden Public Schools

Enrollment Projections and Redistricting/ Realignment Options

Hamden Public
Schools

March 2nd 2018



Contents

- Demographic/Housing Update
- Recent Enrollment Trends
- Enrollment Projections
- Redistricting/Realignment Analysis
 - Approach and Considerations
 - Scenarios
 - Scenario Comparison

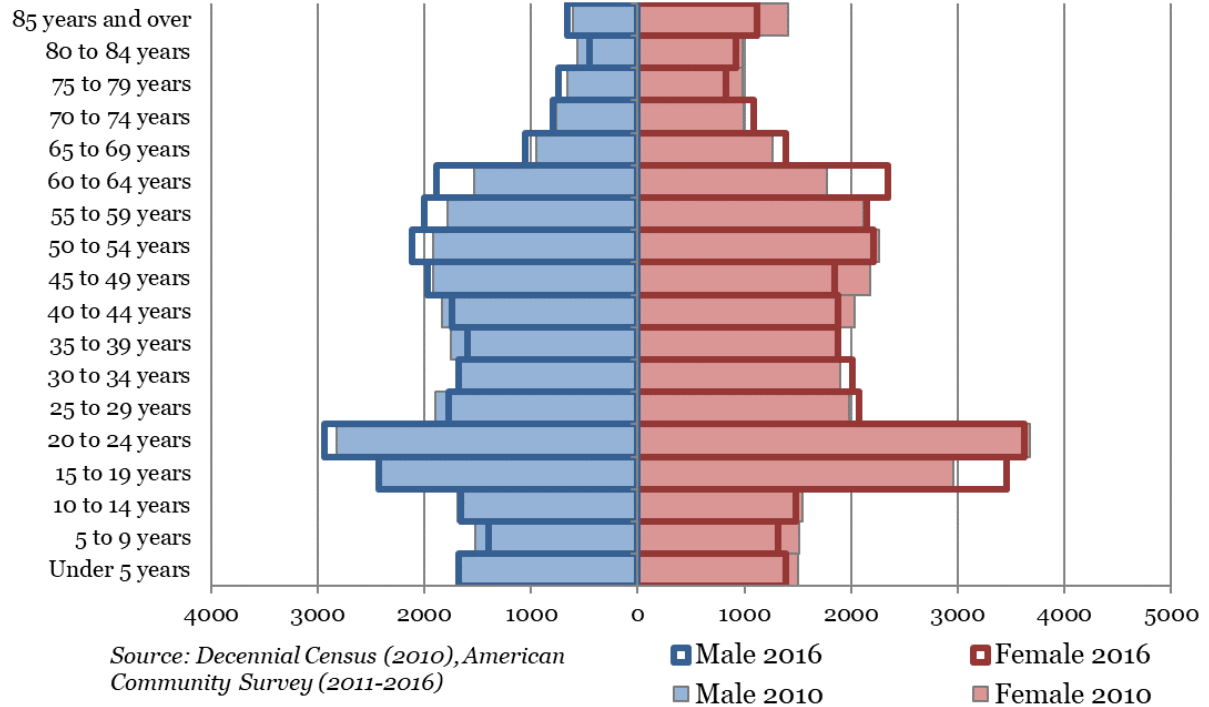
Demographic Update

- Most recent Census estimates (based on 2011 – 2016 data) indicate decline in children under 15 years coupled with growth in older working age adults (50 to 69)

- Females of child-bearing age population (18-44) up 1.3%, but declining birthrates offset this increase

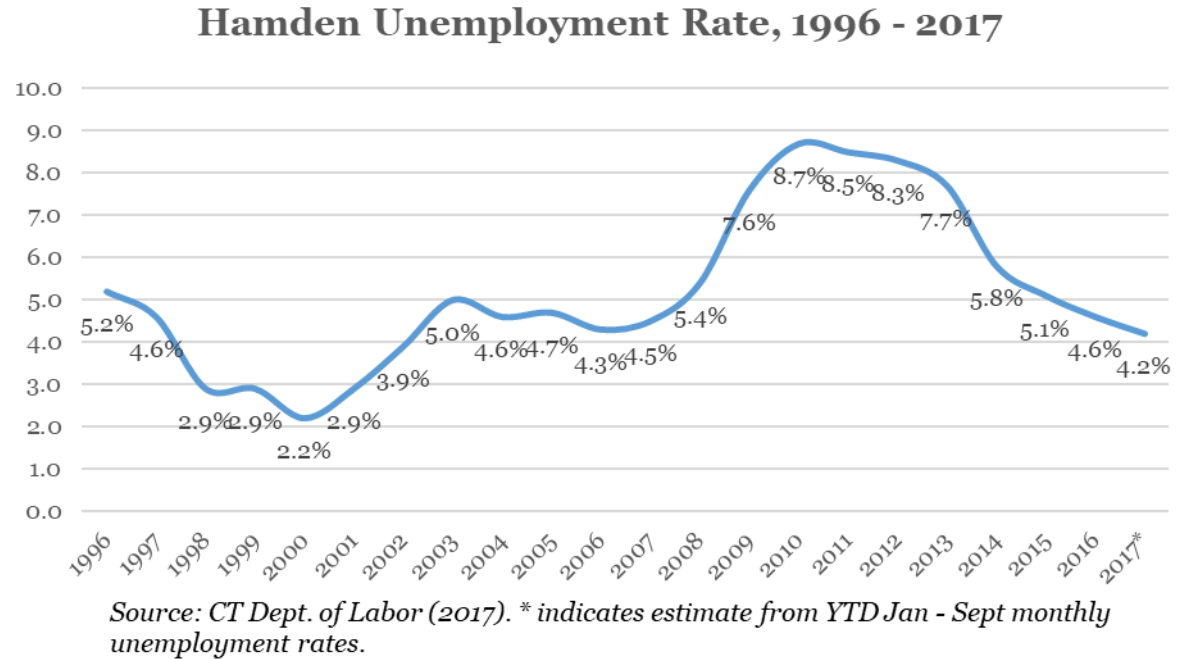
- ACS estimates of school-age children align with declining HPS enrollment trends

Hamden Population Change, 2010 - 2016



Labor Market Update

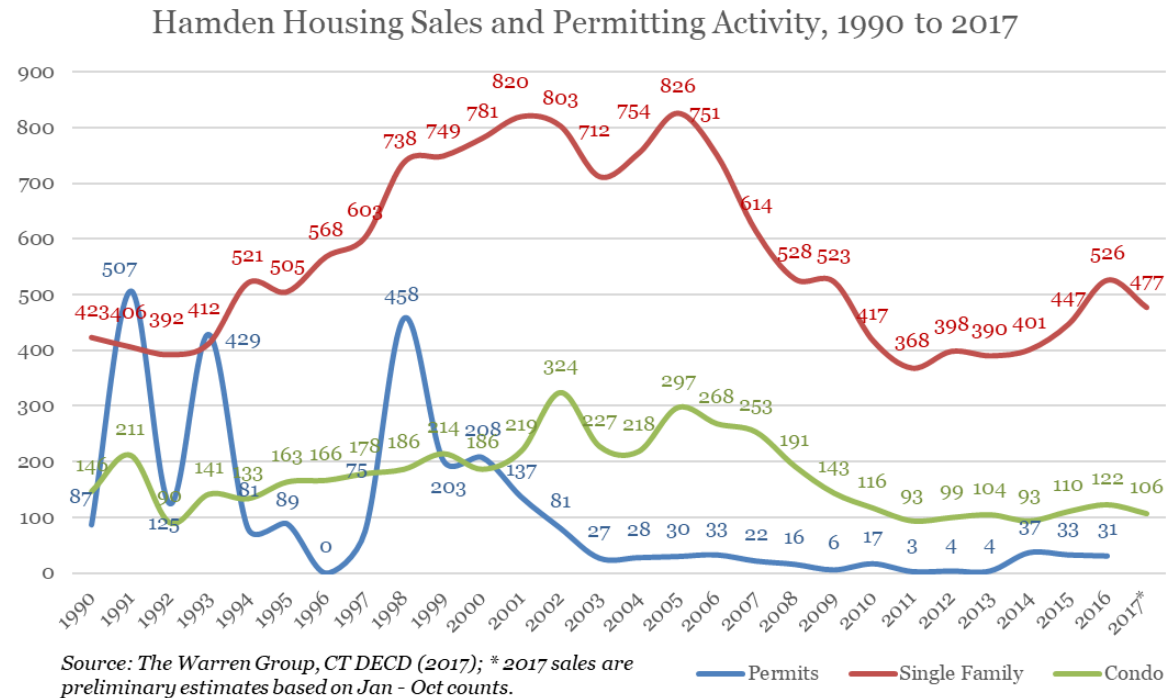
- Current Hamden unemployment data indicates full employment and a tight labor market (comparable to early 2000s)



- Historically, low unemployment is associated with rising birthrates—however, this has not been observed during the current economic recovery at the local, state, or national levels

Housing Update

- New data since last projections shows growth in Single Family home sales for 2016; prelim data for 2017 indicates slight downturn



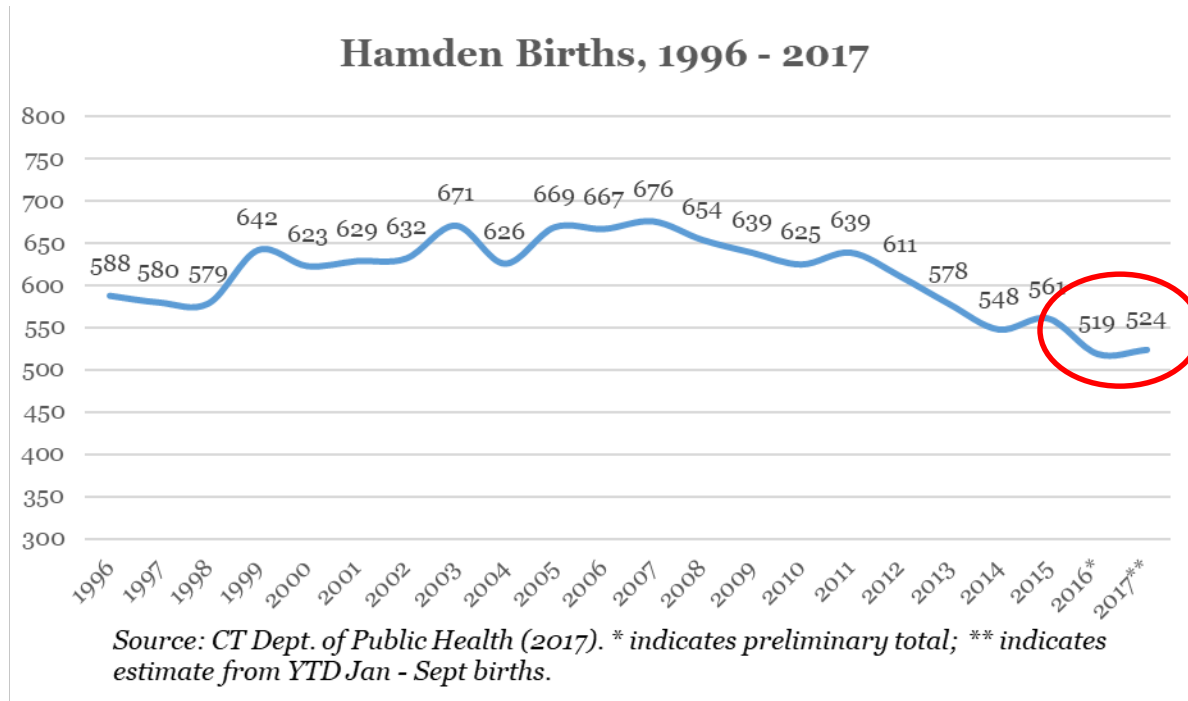
- New housing permits have held steady since 2014 (does not fully reflect recently approved multifamily projects – Mather St)
- Median single family sales prices have remained slightly below \$200k since 2014; YTD median for 2017 is \$199k

Housing Update

- Known development activity that may impact projected enrollment includes:
 - Canal Crossing (393 apartments, studio-2BR)
 - 415 Mather St (77 units affordable/supportive housing)
- Per Town Planner, no new large-scale developments are in the pipeline since development of prior projections
- Anticipated enrollment from Canal Crossing (approx. 30 students) incorporated into projections via increases to persistency ratios for Shepherd Glen Elementary



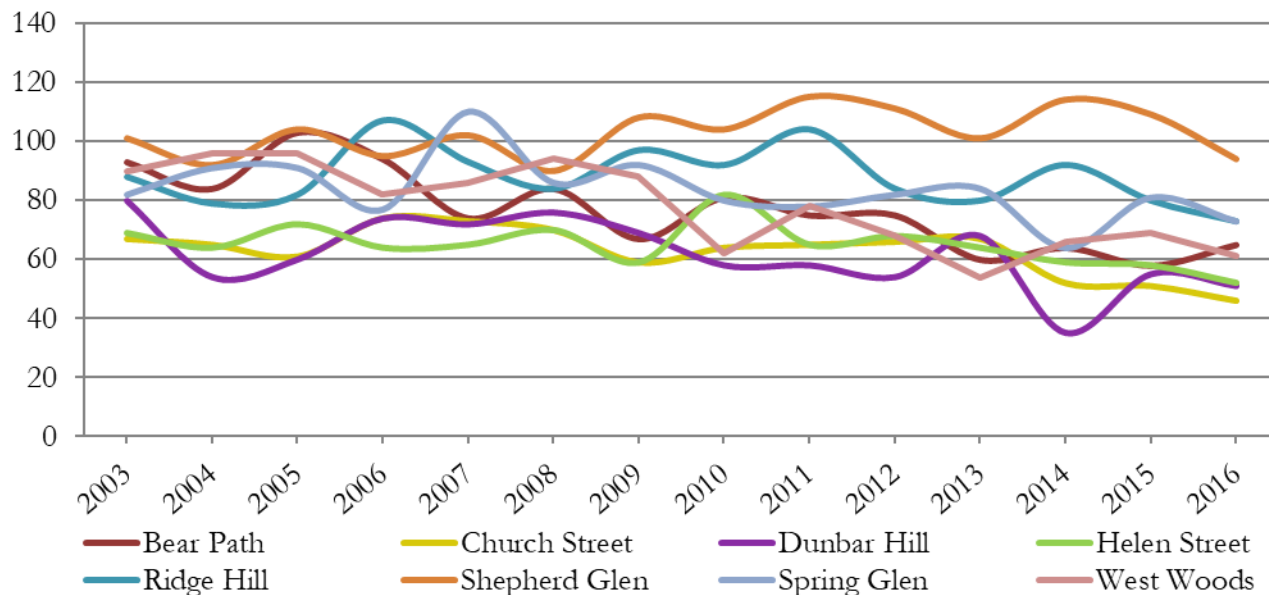
Births Update



- Local births have declined steadily since the late 2000s
- Birth records for 2016 showed the lowest number of local births since at least the mid-90s, and estimated 2017 births are likely to remain at a similar level

Births Update

Births by School District



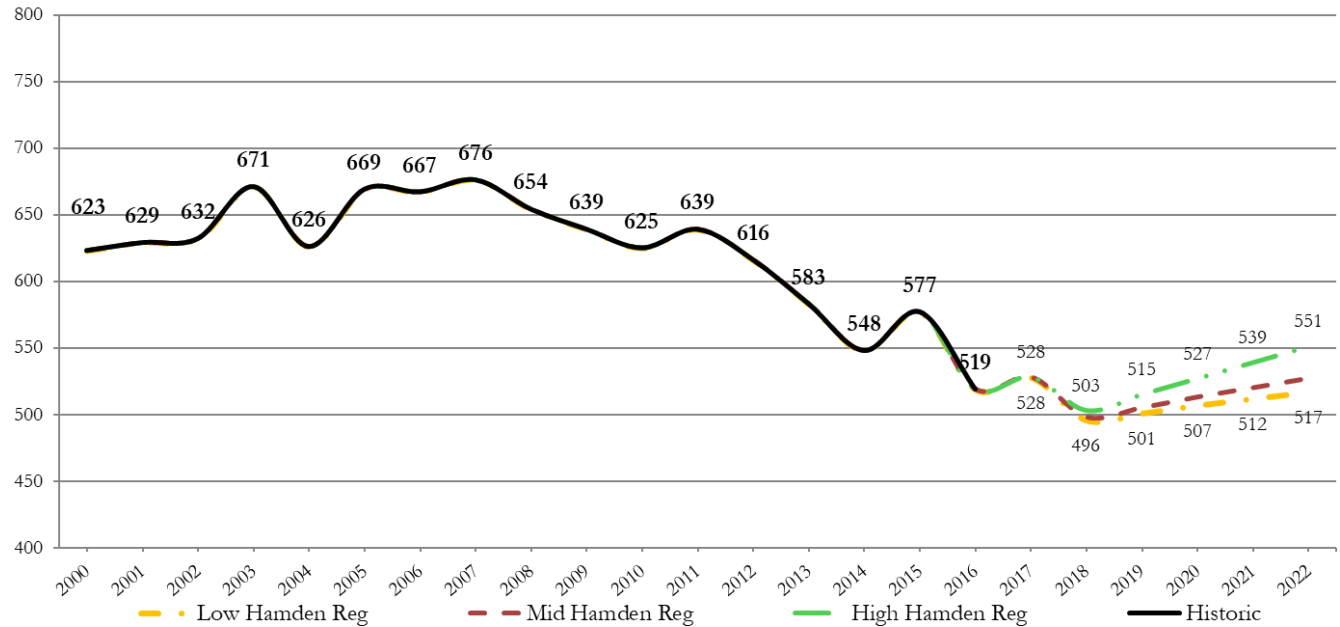
Source: CT Dept. of Public Health. This study was approved by the DPH Human Investigations Committee. MMI assumes full responsibility for analyses and interpretation of this data.

- Local births available through 2016 show wide spread in trends over past five years, from a 7% decline at Spring Glen to over 40% declines in the Church Street and Ridge Hill attendance zones

Birth Projections

Hamden Birth Projection Comparison
1998 to 2022

	<i>Coefficients</i>
Hamden UE	45.58828016
1Fam	0.626950791

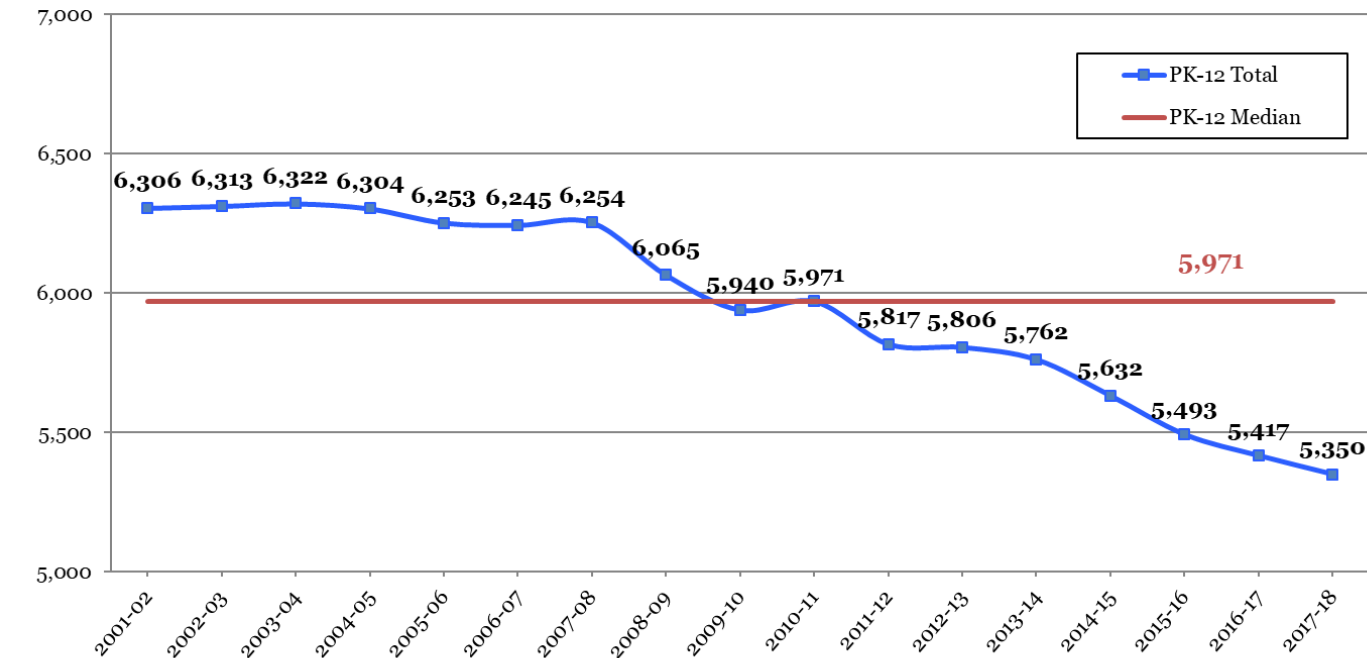


Source: CT Dept. of Public Health; projections prepared by MMI.

- Projected births based on local unemployment and single family home sales show three trajectories corresponding to low, medium, and high projections scenarios
- Births in 2022 range from 517 (low) to 551 (high)

Historic Enrollment

Total (PreK-12th) Historic Enrollments (2001-02 to 2017-18)
Hamden Public Schools

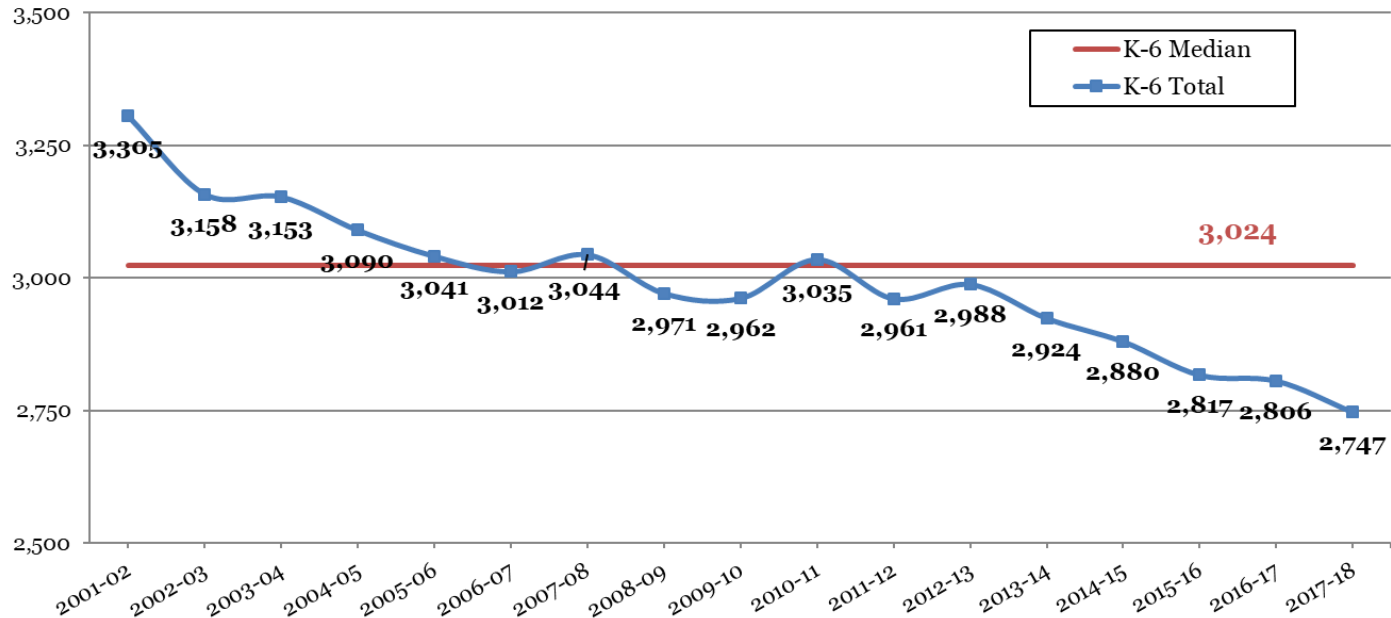


Sources: CT Dept. of Education CeDar, and Hamden Public Schools

- Downward trend in total PK-12 enrollment has continued since prior enrollment projections; total enrollment down 14.5% from 2007-08

Historic Enrollment

Elementary (K-6th) Enrollments Hamden Public Schools

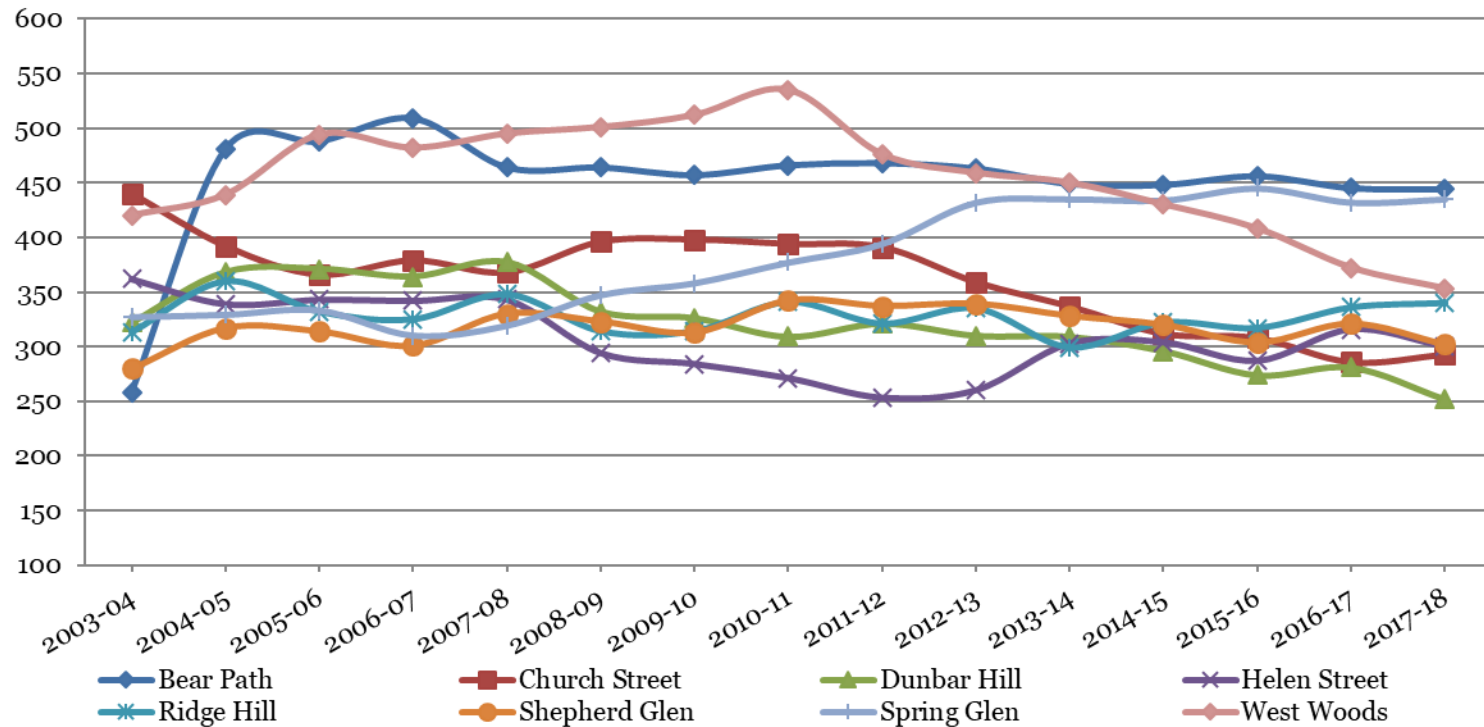


Sources: CT Dept. of Education CeDar, and Hamden Public Schools

- Following undulating plateau from late 2000s to early 2010s, declines at the K-6 level have occurred for the last five years; enrollment is down 9.8% in the last ten years

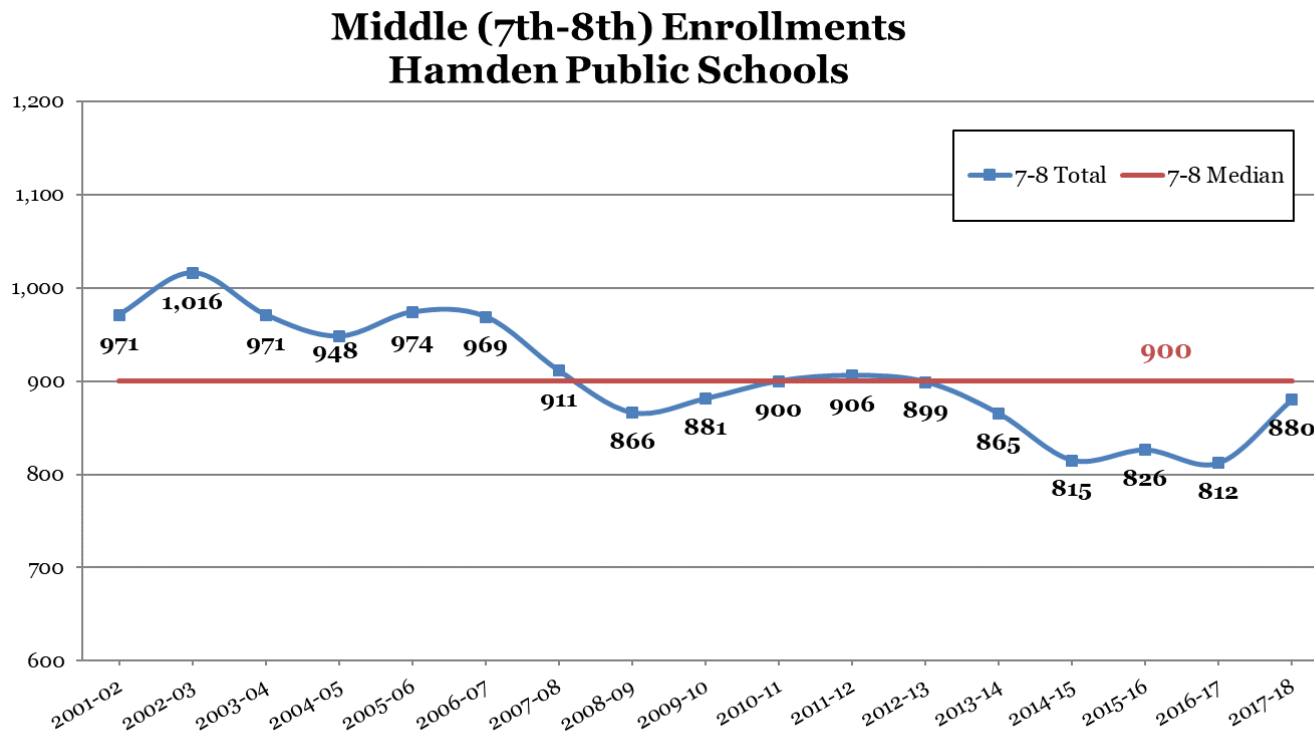
Historic Enrollment

Elementary (K-6) Enrollment by School
Hamden Public Schools



- Comparing across schools, Dunbar Hill and West Woods saw large declines in the past two years, while Spring Glen grew modestly

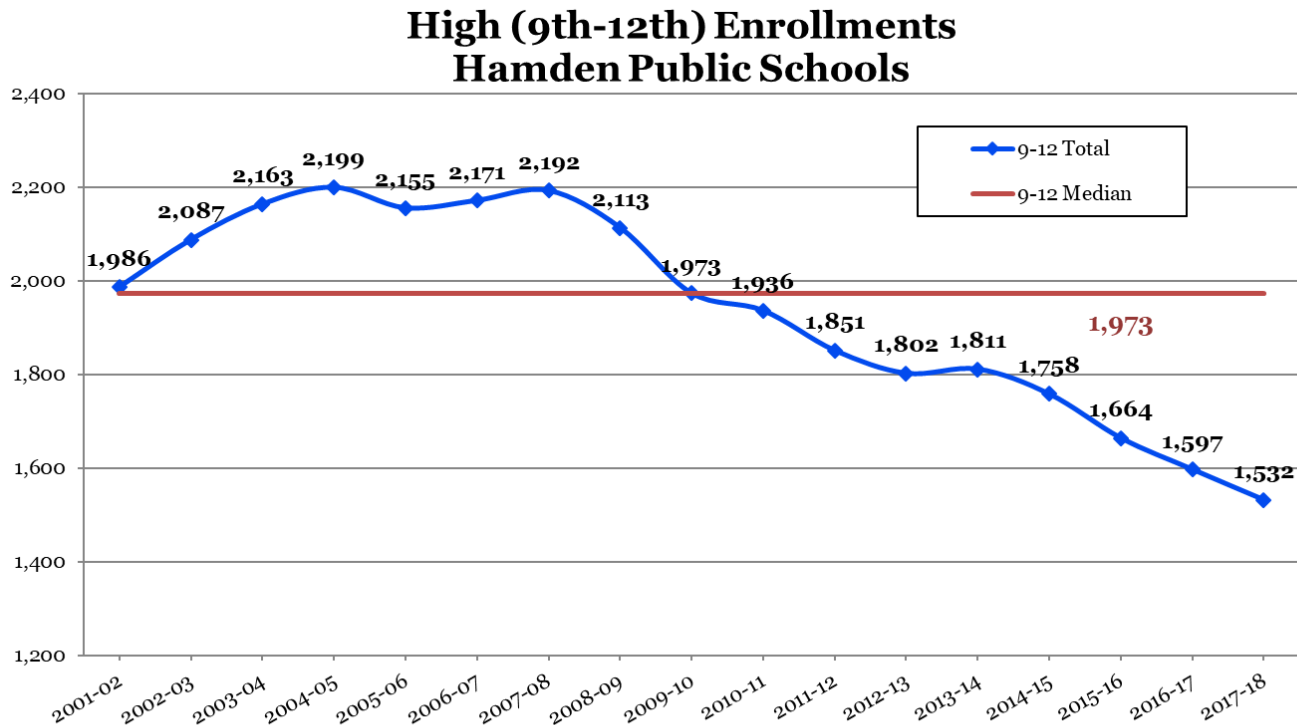
Historic Enrollment



Sources: CT Dept. of Education CeDar, and Hamden Public Schools

- Middle school enrollments spiked in 2017-18 by approx. 70 students as a larger 7th grade cohort matriculated; based on known cohorts that will matriculate in coming years, this increase likely will not be sustained

Historic Enrollment



Sources: CT Dept. of Education CeDar, and Hamden Public Schools

- High school enrollments began sustained decline from mid-2000s peak in 2007-08 and have fallen 30% over the following years

Historic Enrollment

Hamden Public School Enrollment History (K-12th)

School Year	Birth Year	Births	K	1	2	3	4	5	6	7	8	9	10	11	12
2001-02	1996	588	383	413	451	521	497	488	552	475	496	596	514	471	405
2002-03	1997	580	404	421	400	439	514	507	473	528	488	637	525	471	454
2003-04	1998	579	406	447	420	415	444	524	497	454	517	607	595	495	466
2004-05	1999	642	415	448	426	416	436	442	507	476	472	610	557	547	485
2005-06	2000	623	451	432	434	427	424	430	443	483	491	556	575	510	514
2006-07	2001	629	410	446	413	454	432	422	435	455	514	594	526	557	494
2007-08	2002	632	459	409	438	436	453	428	421	443	468	599	533	530	530
2008-09	2003	668	438	416	392	442	430	430	423	424	442	541	544	511	517
2009-10	2004	623	434	443	413	376	442	423	431	437	444	480	487	505	501
2010-11	2005	664	481	451	426	411	404	438	424	448	452	487	453	482	514
2011-12	2006	663	439	472	423	395	410	389	433	450	456	473	474	450	454
2012-13	2007	671	440	439	476	419	405	413	396	454	445	458	463	465	416
2013-14	2008	654	424	417	429	440	413	389	412	412	453	471	445	463	432
2014-15	2009	638	415	420	412	406	433	403	391	415	400	430	455	426	447
2015-16	2010	625	387	397	412	401	398	423	399	410	416	393	418	422	431
2016-17	2011	639	378	374	415	399	397	408	435	402	410	388	373	416	420
2017-18	2012	611	382	360	379	407	401	403	415	460	420	375	379	373	405

State Department of Education - Public School Information System, Summary Report; Hamden Public Schools

- Beginning in late 2000s, cohorts that previously progressed through the system at a stable size began experiencing net out-migration of approximately 1.5% per year through the elementary grades, and further through the high school grade
- As a result, the average cohort declined to <400 for the first time in 2017-18
- Recent years (2013-14 onwards) have seen smaller entering K cohorts based on declining births

Projection Methodology

Starting Data

Critical to the overall accuracy of the projections, as each year builds upon the last

District Projections

**Town of
Hamden
Births**

*Obtained from
CT DPH*

**Historic
Enrollment
Trends**

*Obtained from
HPS and CT SDE*

Individual School Projections

**Geolocated
Birth Data**

*Obtained from
CT DPH and
address matched*

**Geolocated
Enrollment
Data**

*Obtained from
HPS and address
matched*

Projection Assumptions

Several projection models are developed by applying different persistency ratios to building blocks

**5-Year
Average**

**3-Year
Average**

**3-Year
Weighted**

Blended

Demographic and Housing Data

Used to inform model selection and birth projections

**Unemployment
(Town, Region)**

**Housing
Permit Activity**

**Home Sales
(1-family,
condos)**

**Women of
Child-Bearing
Age + Fertility
Rates**

**Population
Projections &
Development
Capacity**

Projection Methodology

- The cohort survival methodology relies on observed data from the recent past in order to project the near future
- Persistency Ratios calculated from historic enrollment data to determine growth or loss in a class as it progresses through school system
- Persistency Ratios account for the various external factors affecting enrollments: housing characteristics, residential development, economic conditions, student transfers in and out of system, and student mobility
- Changes in population, housing stock and tenure, and economic conditions help explain persistency ratios
- Recent instability in economic climate adds variability to enrollments, births, and residential mobility

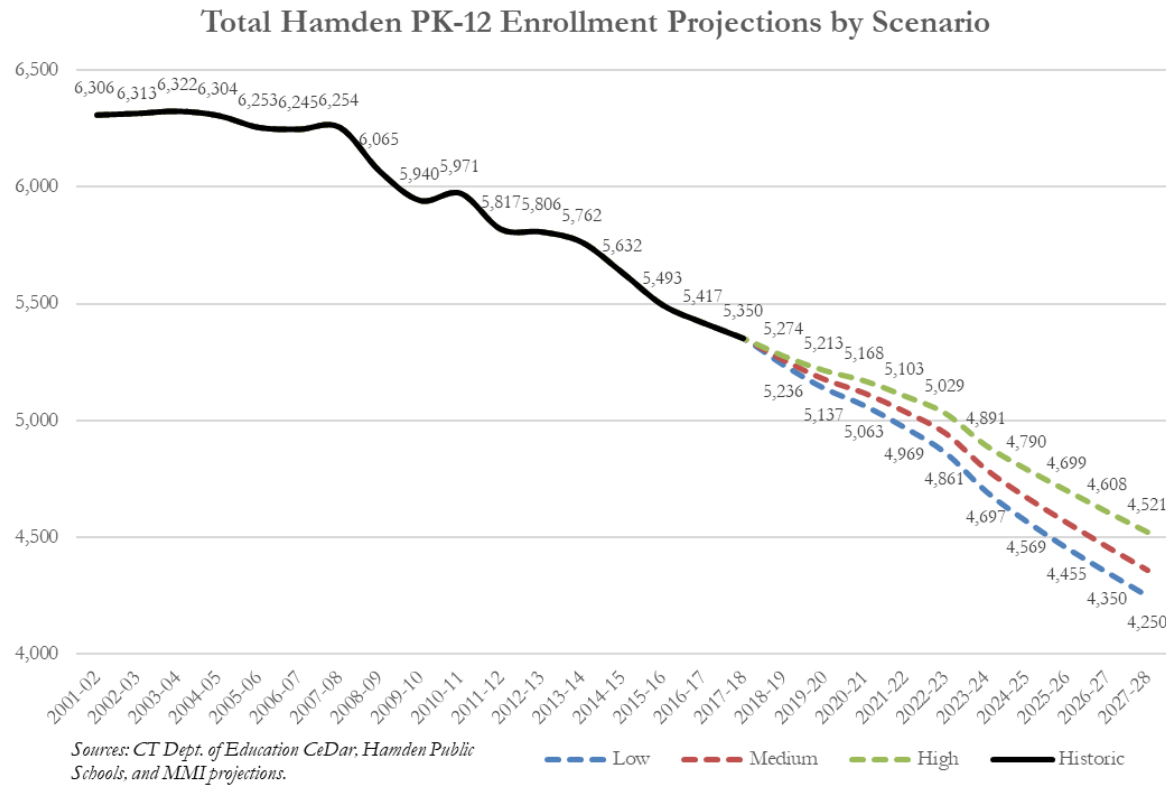
Persistency Ratios

Kindergarten through 12th Grade Persistency Ratios by School Year 2001-2002 to 2017-18														
Year	Birth-K	K-1	1-2	2-3	3-4	4-5	5-6	6-7	7-8	8-9	9-10	10-11	11-12	1-7 to 2-8 Migration
2002-03	0.6966	1.0992	0.9685	0.9734	0.9866	1.0201	0.9693	0.9565	1.0274	1.2843	0.8809	0.9163	0.9639	-1.17%
2003-04	0.7012	1.1064	0.9976	1.0375	1.0114	1.0195	0.9803	0.9598	0.9792	1.2439	0.9341	0.9429	0.9894	-0.35%
2004-05	0.6464	1.1034	0.9530	0.9905	1.0506	0.9955	0.9676	0.9577	1.0396	1.1799	0.9176	0.9193	0.9798	-0.18%
2005-06	0.7239	1.0410	0.9688	1.0023	1.0192	0.9862	1.0023	0.9527	1.0315	1.1780	0.9426	0.9156	0.9397	-0.18%
2006-07	0.6518	0.9889	0.9560	1.0461	1.0117	0.9953	1.0116	1.0271	1.0642	1.2098	0.9460	0.9687	0.9686	2.69%
2007-08	0.7263	0.9976	0.9821	1.0557	0.9978	0.9907	0.9976	1.0184	1.0286	1.1654	0.8973	1.0076	0.9515	1.46%
2008-09	0.6528	0.9063	0.9584	1.0091	0.9862	0.9492	0.9883	1.0071	0.9977	1.1560	0.9082	0.9587	0.9755	-1.07%
2009-10	0.6933	1.0114	0.9928	0.9592	1.0000	0.9837	1.0023	1.0331	1.0472	1.0860	0.9002	0.9283	0.9804	0.47%
2010-11	0.7190	1.0392	0.9616	0.9952	1.0745	0.9910	1.0024	1.0394	1.0343	1.0968	0.9438	0.9897	1.0178	2.18%
2011-12	0.6582	0.9813	0.9379	0.9272	0.9976	0.9629	0.9886	1.0613	1.0179	1.0465	0.9733	0.9934	0.9419	-0.71%
2012-13	0.6509	1.0000	1.0085	0.9905	1.0253	1.0073	1.0180	1.0485	0.9889	1.0044	0.9789	0.9810	0.9244	1.28%
2013-14	0.6483	0.9477	0.9772	0.9244	0.9857	0.9605	0.9976	1.0404	0.9978	1.0584	0.9716	1.0000	0.9290	-1.72%
2014-15	0.6495	0.9906	0.9880	0.9464	0.9841	0.9758	1.0051	1.0073	0.9709	0.9492	0.9660	0.9573	0.9654	-1.88%
2015-16	0.6192	0.9566	0.9810	0.9733	0.9803	0.9769	0.9901	1.0486	1.0024	0.9825	0.9721	0.9275	1.0117	-0.53%
2016-17	0.5915	0.9664	1.0453	0.9684	0.9900	1.0251	1.0284	1.0075	1.0000	0.9327	0.9491	0.9952	0.9953	0.33%
2017-18	0.6201	0.9524	1.0134	0.9807	1.0050	1.0151	1.0172	1.0575	1.0448	0.9146	0.9768	1.0000	0.9736	2.04%
Long Term Avg.	0.6656	1.0055	0.9806	0.9862	1.0066	0.9909	0.9979	1.0139	1.0170	1.0930	0.9412	0.9626	0.9693	
5-Year Avg.	0.6257	0.9627	1.0010	0.9586	0.9890	0.9907	1.0077	1.0323	1.0032	0.9675	0.9671	0.9760	0.9750	
5-Year Weighted Avg.	0.6181	0.9618	1.0096	0.9676	0.9920	1.0013	1.0118	1.0345	1.0114	0.9472	0.9667	0.9785	0.9829	
3-Year Avg.	0.6103	0.9585	1.0132	0.9742	0.9918	1.0057	1.0119	1.0379	1.0157	0.9433	0.9660	0.9742	0.9935	
3-Year Weighted Avg.	0.6104	0.9578	1.0186	0.9754	0.9959	1.0121	1.0164	1.0393	1.0228	0.9320	0.9668	0.9863	0.9872	
4-Year Avg	0.6201	0.9665	1.0069	0.9672	0.9899	0.9982	1.0102	1.0302	1.0045	0.9448	0.9660	0.9700	0.9865	
2-Year Avg	0.6058	0.9594	1.0294	0.9746	0.9975	1.0201	1.0228	1.0325	1.0224	0.9237	0.9630	0.9976	0.9844	

Source: Calculated by MMI from State Department of Education, Public School Information System (2001-2013), Hamden School District (2012-13 through 2014-15 enrollments), and CT Department of Public Health (CT DPH) Birth Data. This study was approved by the DPH HIC. Certain data used in this study were obtained from DPH. MMI assumes full responsibility for analyses and interpretation of this data.

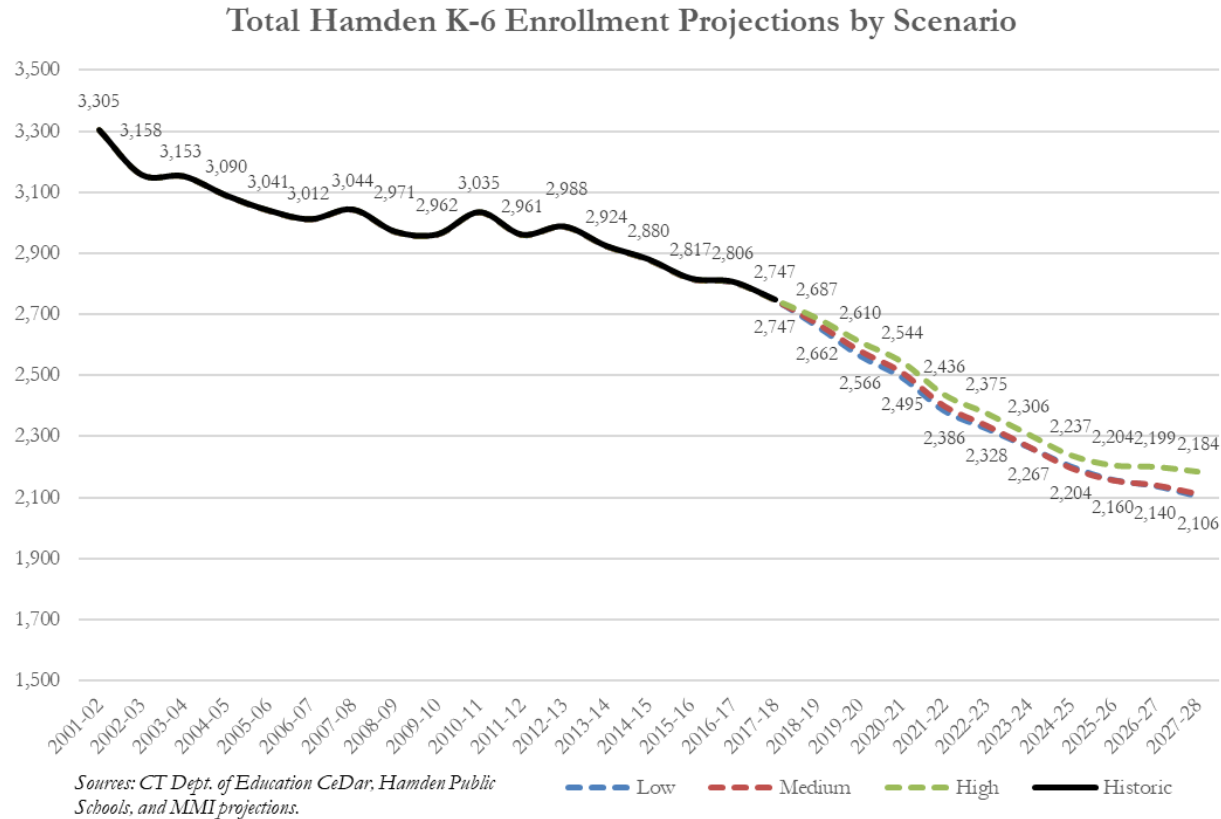
- Persistency ratios reflect the ratio of one year's cohort size to the same cohort in the prior year (e.g. 2017-18 1st grade students to 2016-17 K students), with 1.0 reflecting a stable transition while 0.95 or 1.05 reflect 5% decline or 5% increase, respectively

Projection Overview



- Total PK-12 enrollment projected to decline by 15.5% to 20.6% over a ten year projection horizon, resulting in a 2027-28 student body of between 4,250 and 4,521 students
- Medium scenario depicts most probable scenario for future enrollments in HPS schools

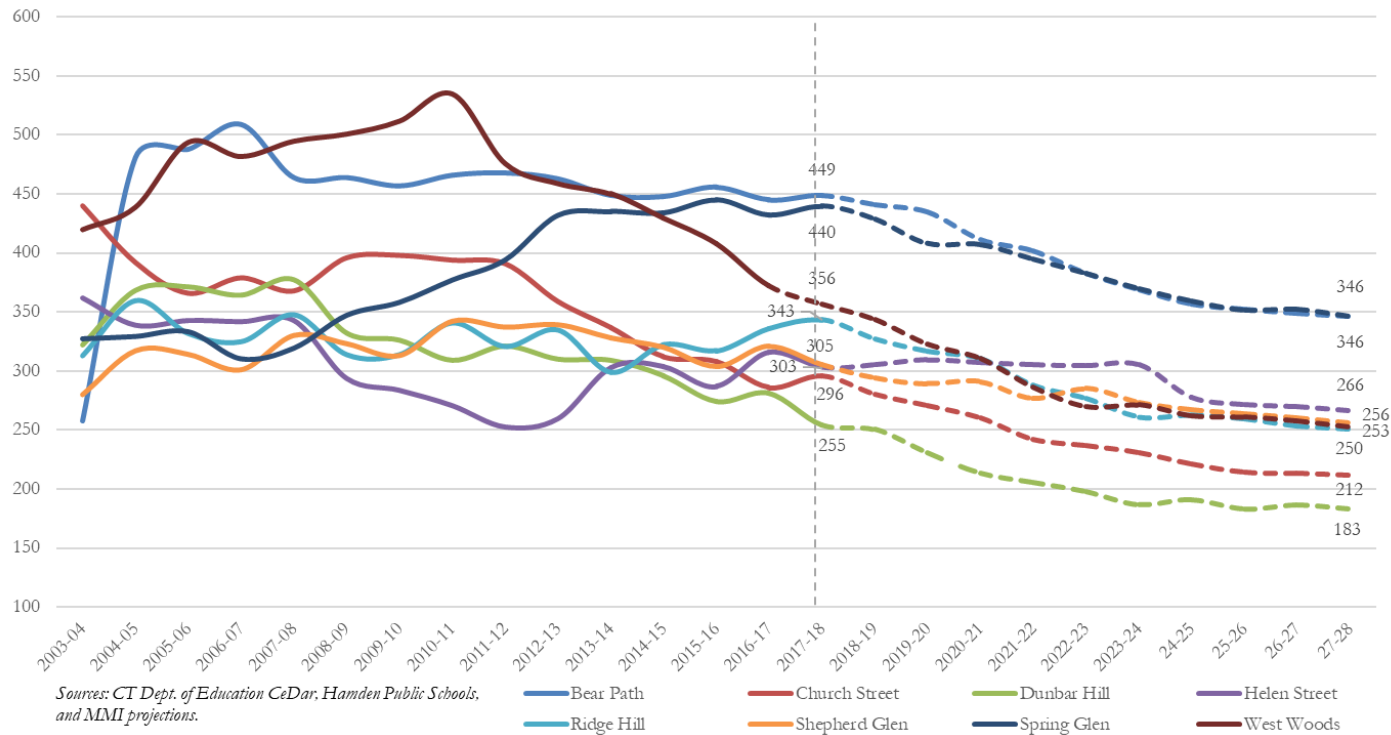
Elementary Projections



- K-6 projections show total decline of 20.5% to 23.3% over ten years as historically small birth cohorts continue to enter the system
- Decline begins to level out around 2024-25 through 2027-28 as entering K cohorts stabilize

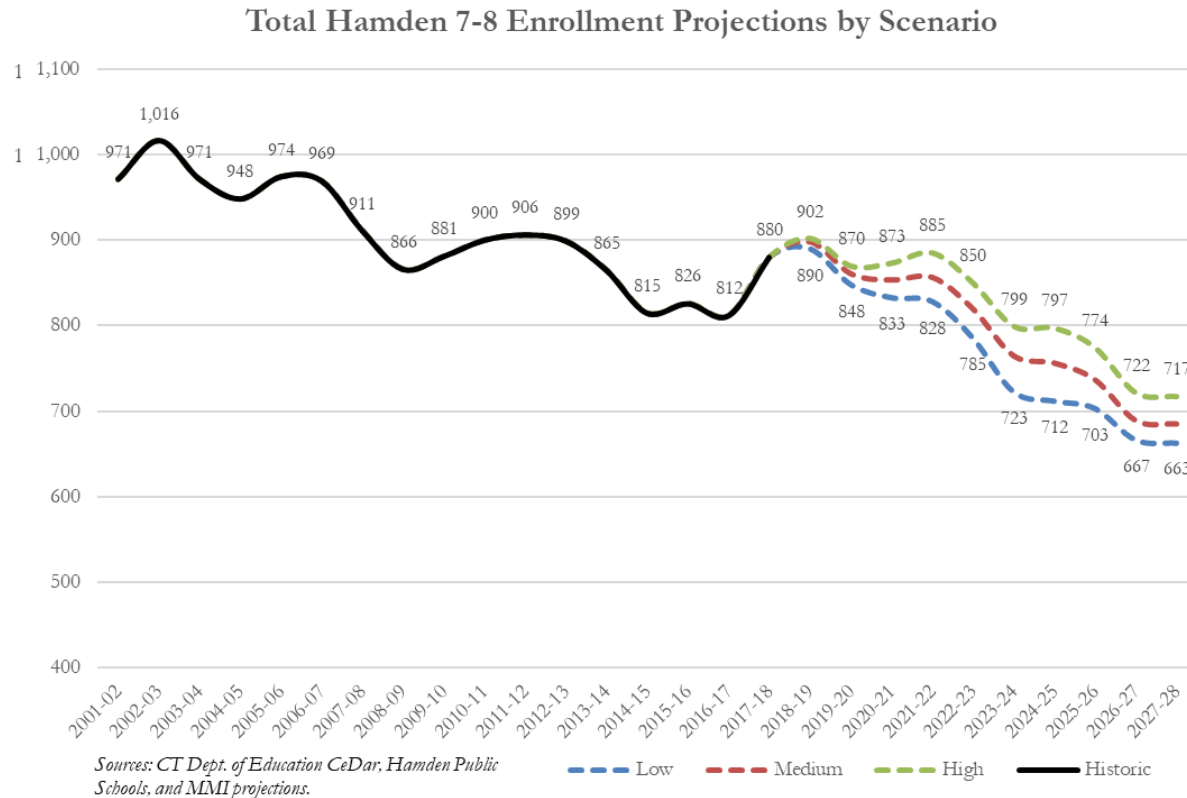
Elementary Projections

Hamden Elementary Actual and Projected Enrollments (Medium Scenario)
2003-04 to 2027-28



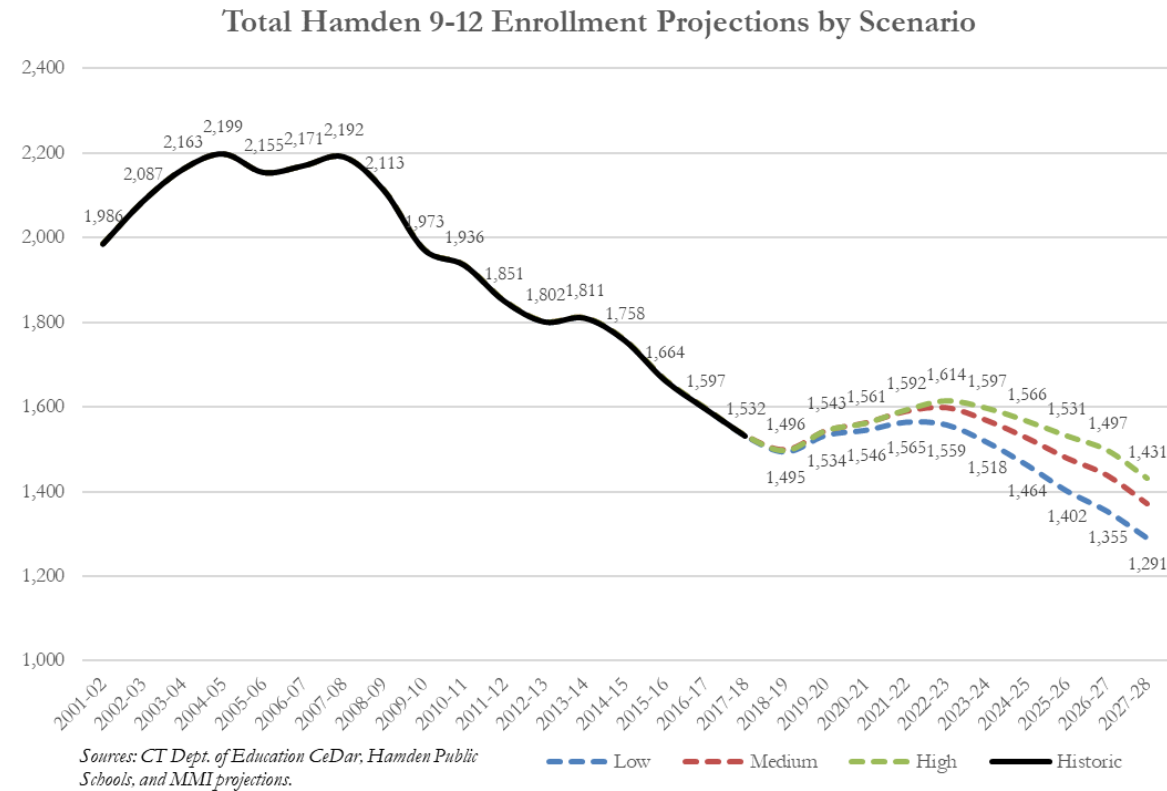
- Under the medium projection scenario, K-6 declines are concentrated at Dunbar Hill and West Woods in the first five years of projections; at the ten-year horizon, Church Street and Ridge Hill also decline steeply
- Helen Street and Shepherd Glen anticipated to experience least dramatic declines, while Bear Path and Spring Glen are close to districtwide trend

Middle Projections



- Middle school enrollments projected to see slight growth in 2018-19 before beginning declining trajectory, with a small bump possible in 2021-22; net decline is projected to fall between 18.5% and 24.7%
- Declines driven primarily by progression of known cohorts currently in lower grades to the middle school level

High Projections



- High school enrollments are projected to decline slightly in 2018-19 before rebounding through 2022-23 as current cohorts of >400 students progress through grades 9-12; thereafter, declining trend is projected to resume for total declines of 6.6% to 15.7%

Districtwide Projections

Medium Projection Scenario

School Year	Birth Year	Births	K	1	2	3	4	5	6	7	8	9	10	11	12	PK
2017-18	2012	616	382	360	379	407	401	403	415	460	420	375	379	373	405	191
2018-19	2013	583	356	366	365	369	404	403	408	431	467	396	362	369	371	190
2019-20	2014	548	334	341	371	355	366	406	408	423	437	441	383	353	367	190
2020-21	2015	577	352	321	346	361	352	368	411	424	430	413	426	373	351	190
2021-22	2016	519	317	338	325	337	358	354	373	426	430	405	399	415	370	190
2022-23	2017	528	322	304	342	316	334	360	359	387	433	406	392	388	412	190
2023-24	2018	498	304	309	308	333	314	336	365	372	393	408	392	382	386	190
2024-25	2019	505	308	291	313	300	330	316	340	379	378	371	395	382	379	190
2025-26	2020	513	313	295	295	305	297	332	319	353	385	357	358	384	379	190
2026-27	2021	520	317	300	299	288	302	299	336	331	358	363	344	349	382	190
2027-28	2022	527	322	304	304	292	285	304	302	349	337	338	350	336	346	190

	PK-12	K-12	K-6	7-8	9-12
School Year	Total	Total	Total	Total	Total
2017-18	5,350	5,159	2,747	880	1,532
2018-19	5,256	5,067	2,671	898	1,498
2019-20	5,175	4,986	2,582	861	1,543
2020-21	5,116	4,926	2,511	853	1,562
2021-22	5,036	4,847	2,401	857	1,589
2022-23	4,944	4,755	2,337	820	1,598
2023-24	4,790	4,601	2,268	765	1,568
2024-25	4,670	4,481	2,198	757	1,526
2025-26	4,562	4,373	2,157	737	1,478
2026-27	4,459	4,269	2,142	690	1,438
2027-28	4,358	4,169	2,113	686	1,370

Redistricting/Realignment

- Approach and Considerations
- Scenarios
- Scenario Comparison

Scenario Considerations

- Achieving better utilization of HPS facilities and balancing utilization across district
- Creating districts aligned with state racial balance requirements
- Aligning facilities and attendance zones with current and projected students

Scenario Planning

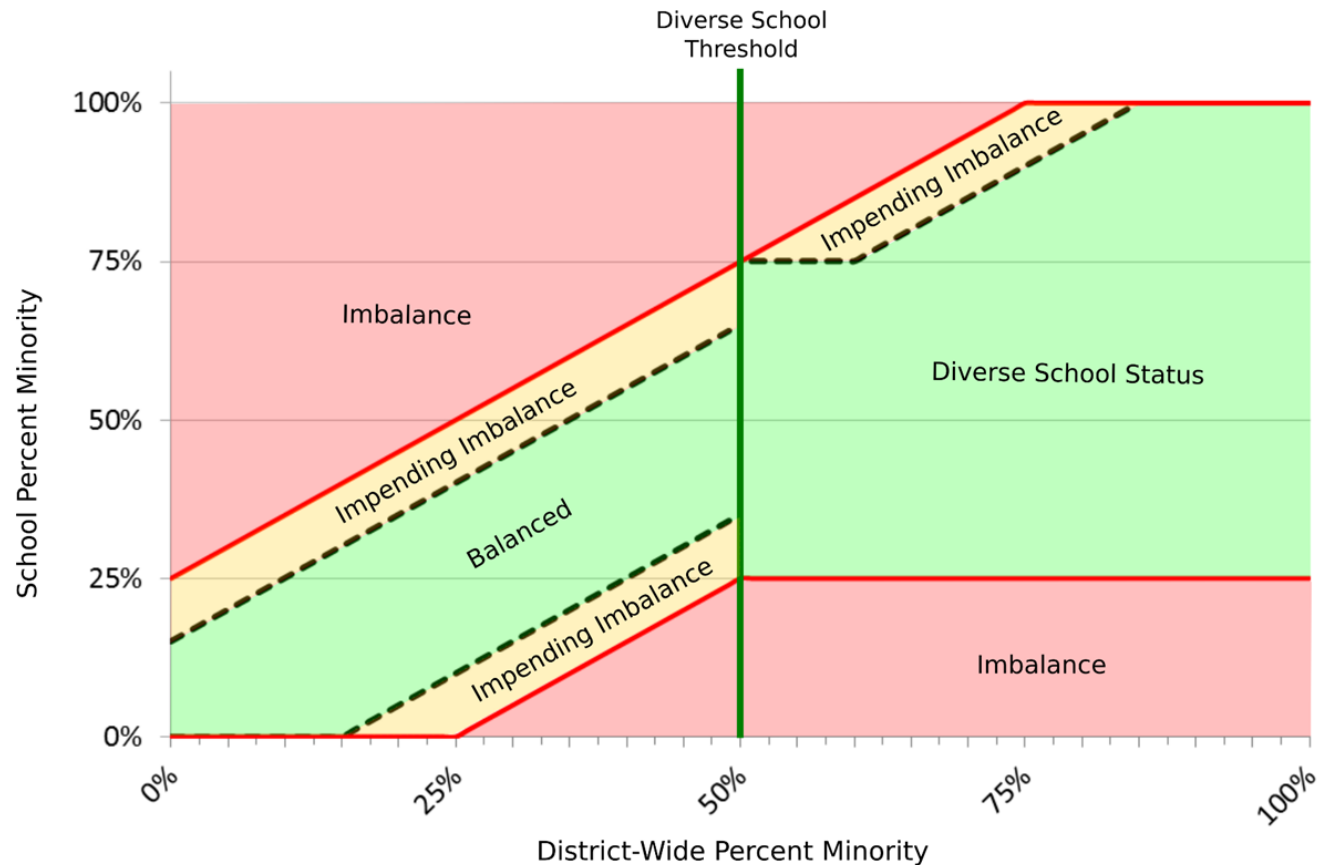
Methodology and Assumptions

- All scenarios were tested using October 1, 2017 enrollment data – students were reassigned to hypothetical boundaries
 - For viable scenarios, projections will be developed to test long-term viability of options
- Developed planning capacity – the capacity for each school building that reflect the current available seats for instruction (includes 10% headroom to accommodate year-to-year variation in cohorts)
- Presenting a range of scenarios that can be combined into a preferred alternative.

Scenarios are not recommendations, but are informational exercises meant to help the BOE assess feasibility of different actions and quantify impacts associated with those actions

Racial Balance

In developing potential scenarios, each schools' projected student body is assessed relative to state law on racial imbalance in public schools (CGS 10-226e)



As a district with over 50% minority enrollment, Hamden schools have Diverse School Status, meaning that any school with a student body between 25% and 75% minority students is treated as racially balanced

Racial Balance

School	2016-17			2012-13		
	Enrollment	% Minority	% Imbalance	Enrollment	% Minority	% Imbalance
Spring Glen *	432	33.8%	27.56%	429	32.6%	23.73%
Church Street	319	88.1%	25.75%	371	83.3%	26.09%
Helen Street	347	87.3%	24.98%	288	79.9%	22.67%
Bear Path *	445	42.3%	19.11%	463	35.0%	21.38%
Shepherd Glen	321	77.3%	15.91%	336	69.1%	12.68%
West Woods *	372	46.5%	14.85%	461	36.0%	20.36%
Ridge Hill *	336	74.1%	12.75%	334	76.4%	19.98%
Dunbar Hill *	299	65.9%	3.54%	308	66.6%	10.19%
Districtwide (K-6)	2823	61.35%		2954	56.4%	

Source: CT SDE Racial Imbalance Reports (2012 - 2016); * Diverse School Status (between 25% and 75% minority student body)

- Church Street and Helen Street schools have had student bodies with significantly higher than average % minority populations, putting them in imbalance/impending imbalance
- Shepherd Glen's student body also is in impending imbalance, although it is unlikely to reach imbalanced status imminently
- K-6 student body has become more heavily weighted towards minority students since 2012 (61% vs. 56%)

Elementary Capacity

School	Total Full-Size Rooms	Grade Level Instructional Rooms	Art	Music	Computer	SPED/ Resource/ Other in Full-Size	Target Capacity
Alice Peck	19	0	1	1		17	0
Bear Path	29	22	1	2	1	3	429
Church Street	30	20	1	1	1	7	345
Dunbar Hill	22	16	1	2	1	2	312
Helen Street	22	20	1	1		0	345
Ridge Hill	25	19	1	1	2	2	371
Shepherd Glen	23	19	1	1	1	1	371
Spring Glen	26	23	1	2	0	0	449
West Woods	29	21	1	1	2	4	410
Total	225	160	9	12	8	36	3032

SPED/ Resource and Other rooms include Readiness, Math/ Literacy Coaches, OT/PT, Special Education and other uses ONLY when located in full-size classrooms or spaces designated as full-size classrooms. There are numerous smaller spaces in each building also used for these kinds of programs.

- Scenarios developed based on fit with building capacities, as established under previous study, and updated based on Fall 2017 data on use of full-size rooms and administrative input
- Utilization and scenario feasibility assessed based on current deployment and programming of space
- Target capacity includes 10% headroom to accommodate year-to-year variation in cohorts

Elementary Utilization

School	Target Capacity	2017-18 (Actual)		2022-23 (Mid. Projection)		2027-28 Mid. Projection)	
		Enrollment	Utilization	Enrollment	Utilization	Enrollment	Utilization
Alice Peck	0	N/A	N/A	N/A	N/A	N/A	N/A
Bear Path	429	444	103.5%	383	89.3%	346	80.7%
Church Street	345	293	84.9%	237	68.6%	212	61.4%
Dunbar Hill	312	252	80.8%	198	63.4%	183	58.7%
Helen Street	345	300	87.0%	305	88.4%	266	77.2%
Ridge Hill	371	340	91.6%	277	74.6%	250	67.5%
Shepherd Glen	371	302	81.4%	285	76.8%	256	69.0%
Spring Glen	449	435	96.9%	383	85.3%	346	77.1%
West Woods	410	353	86.1%	270	65.9%	253	61.6%
Total	3032	2719	89.7%	2337	77.1%	2113	69.7%

- As a whole, Current Elementary utilization at nearly 90%, however, projected enrollment decline will drop utilization to 77% in 5-years.
- Individual School Utilization ranges from 68% (Church Street) to slightly over 100% (Bear Path)
 - For 2022-23, ranges from 55% to 89%,
 - For 2027-28, further declines to 49% to 81%

Scenarios Explored

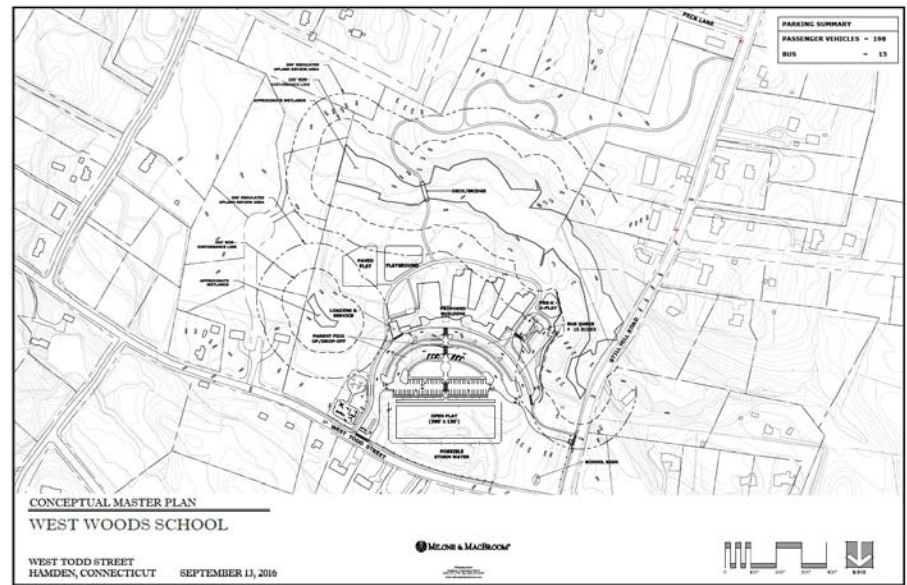
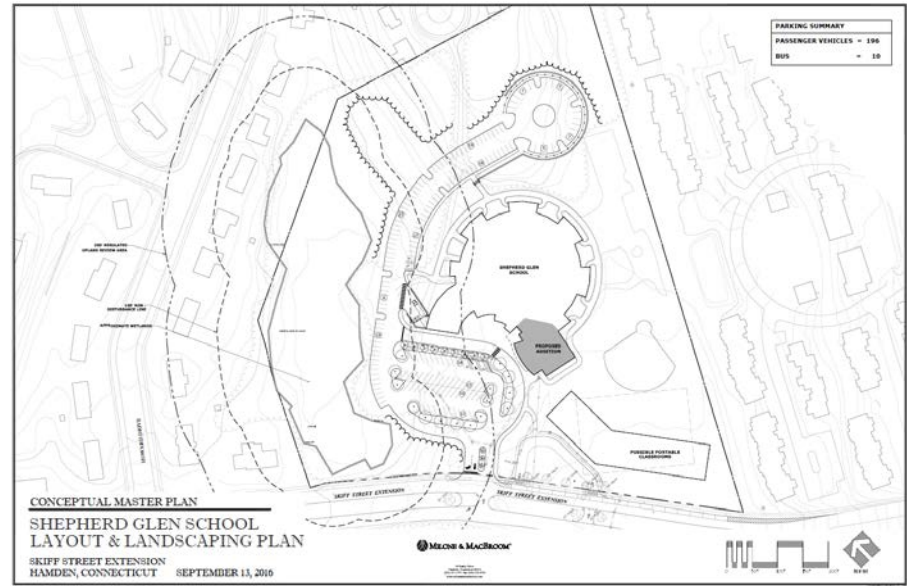
- Alternative 1A: Shepherd & West Woods projects
- Alternative 1B: Shepherd & West Woods projects, close Helen Street
- Alternative 2: 6th grade to middle school, close two elementary buildings
- *Alternative 3A: 6th grade to MS, close Shepherd Glen*
- Alternative 3B: 6th grade to MS, close Helen Street
- *Alternative 4: incorporate Wintergreen as HPS K-6 (local and magnet components), close Helen Street*
- Alternative 5: incorporate Wintergreen as HPS K-6 (local only), close two elementary buildings
- Alternative 6: Shepherd & West Woods projects; incorporate Wintergreen as HPS K-6 (local only), close two elementary buildings
- Alternative 7: West Woods project; incorporate Wintergreen as HPS K-5 (local only), close three elementary buildings

Scenario Viability

Scenario	Grade Configuration		School(s) Closed	Viable Scenario?
	Elementary	Middle		
Viable Scenarios				
1A	K-6	7-8	N/A	-
1B	K-6	7-8	Helen Street	Yes
2	K-5	6-8	Shepherd Glen, Helen Street	Yes
3B	K-5	6-8	Helen Street	Yes
5	K-6	7-8	Shepherd Glen, Helen Street	Yes
6	K-6	7-8	Helen Street, Church Street	Yes
7	K-5	6-8	Dunbar Hill, Helen Street, Shepherd Glen	Yes
Non-Viable Scenarios (Eliminated From Consideration)				
3A	K-5	6-8	Shepherd Glen	No
4	K-6	7-8	Helen Street	No

Alternative 1A

- Through Construction Program Expand Shepherd Glen Enrollment to a 475 Student School
- Construction Program at West Woods Elementary School for 429 students



Alternative 1A

School	Total K-6	K-6 Minority	% Minority	Absolute Imbalance	Planning Capacity	Utilization	Surplus/ Deficit
Bear Path	404	181	44.8%	16.9%	429	94.2%	+25
Church Street	272	241	88.6%	26.9%	345	78.8%	+73
Dunbar Hill	237	163	68.8%	7.1%	312	76.0%	+75
Helen Street	279	241	86.4%	24.7%	345	80.9%	+66
Ridge Hill	318	236	74.2%	12.5%	371	85.7%	+53
Shepherd Glen	440	314	71.4%	9.7%	475	92.6%	+35
Spring Glen	389	125	32.1%	29.6%*	449	86.6%	+60
West Woods	348	157	45.1%	16.6%	429	81.1%	+81
Total	2687	1658	61.7%	0.0%	3155	85.2%	+468

*Total K-6 count of 2687 students excludes 60 records (unplaceable, out of district, APEC); * Diversity school status under CGS 10-266e*

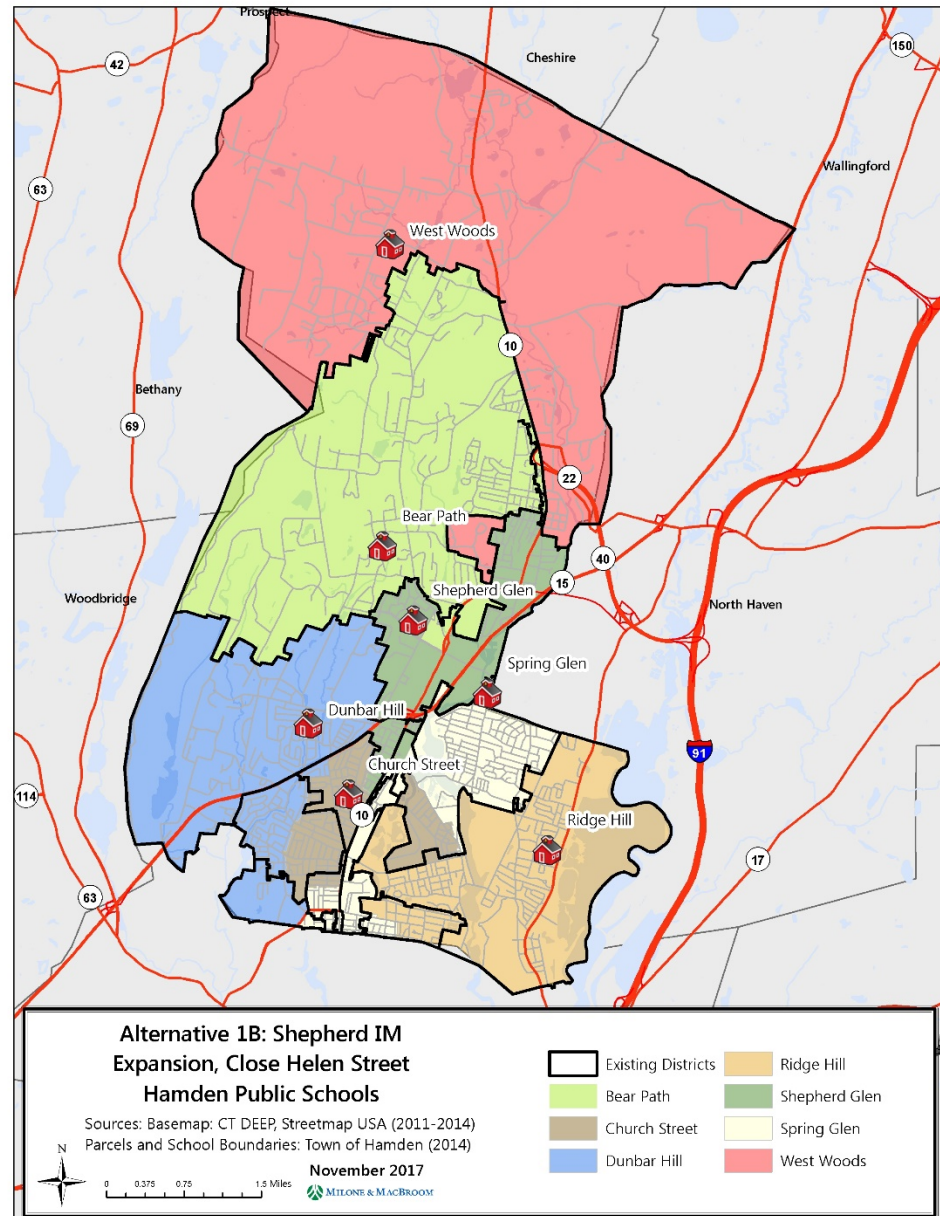
- Implementation of Shepherd & West Woods projects without reconfiguration/redistricting would lessen utilization of other buildings (districtwide surplus of ~475 seats)
- Helen Street, Church Street schools would remain racially imbalanced

Alternative 1A: Considerations

- In order to achieve balanced space utilization between buildings and bring all elementary schools into racial balance significant districtwide redistricting will be necessary

Alternative 1B

- Alternative 1B: Shepherd & West Woods projects completed
- Helen Street Closed
- Would require redistricting approximately 850 (32%) K-6 students



Alternative 1B

School	Total K-6	K-6 Minority	% Minority	Absolute Imbalance	Planning Capacity	Utilization	Surplus/ Deficit
Bear Path	406	190	46.8%	14.9%	429	94.6%	+23
Church Street	406	296	72.9%	11.2%	345	117.7%	-61
Dunbar Hill	314	230	73.2%	11.5%	312	100.6%	-2
Helen Street	0	0	N/A	N/A	0	N/A	N/A
Ridge Hill	351	258	73.5%	11.8%	371	94.6%	+20
Shepherd Glen	443	305	68.8%	7.1%	475	93.3%	+32
Spring Glen	428	225	52.6%	9.1%	449	95.3%	+21
West Woods	339	154	45.4%	16.3%*	429	79.0%	+90
Total	2687	1658	61.7%	0.0%	2810	95.6%	+123

*Total K-6 count of 2687 students excludes 60 records (unplaceable, out of district, APEC); * Diversity school status under CGS 10-266e*

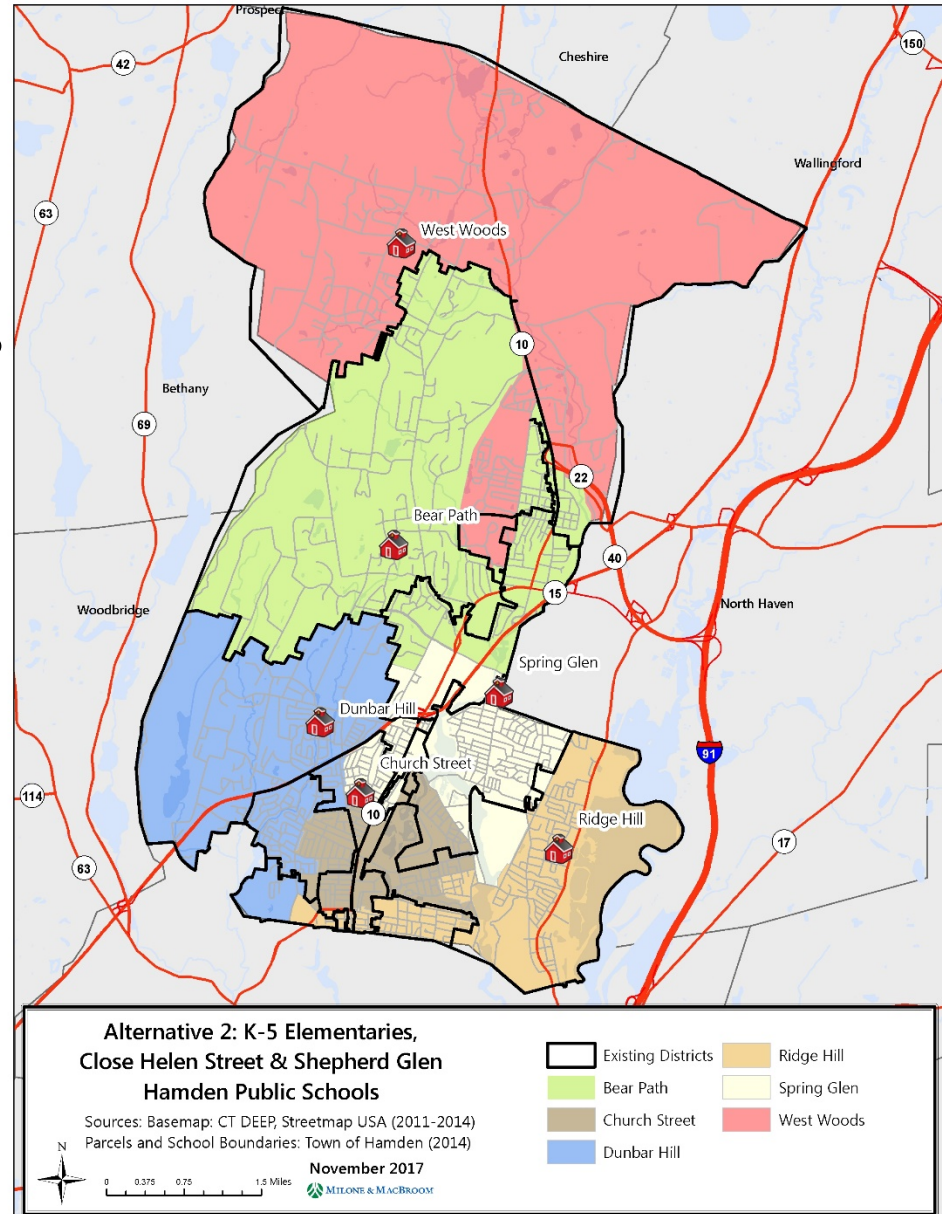
- Achieves efficient (79-101%) utilization of seat capacity across schools
 - Church Street an exception at 118%; would be reduced by reallocation of districtwide programming
- High utilization at Dunbar Hill projected to decline by time of implementation
- No schools in imbalance/impending imbalance
- Districtwide surplus of approximately 125 seats relative to target utilization

Alternative 1B: Considerations

- Feasible option when Shepherd Glen/West Woods projects are complete
- Redistricting impacts all HPS elementary schools except West Woods
- Geographically larger south Hamden districts likely to reduce year-to-year variation in enrollment and demographics – districts may be more resilient to future changes
- Districtwide utilization of ~96% provides high efficiency but leaves small margin for accommodating any future growth in K-6 population

Alternative 2

- Alternative 2: 6th grade to middle school, close two elementary buildings
- “Test-Fit” closes Shepherd Glen and Helen Street
- Would require redistricting approximately 1,050 (46%) K-5 students



Alternative 2

School	Total K-5	K-5 Minority	% Minority	Absolute Imbalance	Planning Capacity	Utilization	Surplus/ Deficit
Bear Path	426	224	52.6%	9.1%	429	99.3%	+3
Church Street	411	306	74.5%	12.8%	345	119.1%	-66
Dunbar Hill	305	228	74.8%	13.1%	312	97.8%	+7
Helen Street	0	0	N/A	N/A	0	N/A	N/A
Ridge Hill	342	262	76.6%	14.9%	371	92.2%	+29
Shepherd Glen	0	0	N/A	N/A	0	N/A	N/A
Spring Glen	417	207	49.6%	12.0%	449	92.9%	+32
West Woods	379	179	47.2%	14.4%	410	92.4%	+31
Total	2280	1406	61.7%	0.0%	2316	98.4%	+36

Total K-5 count of 2280 students excludes 52 records (unplaceable, out of district, APEC)

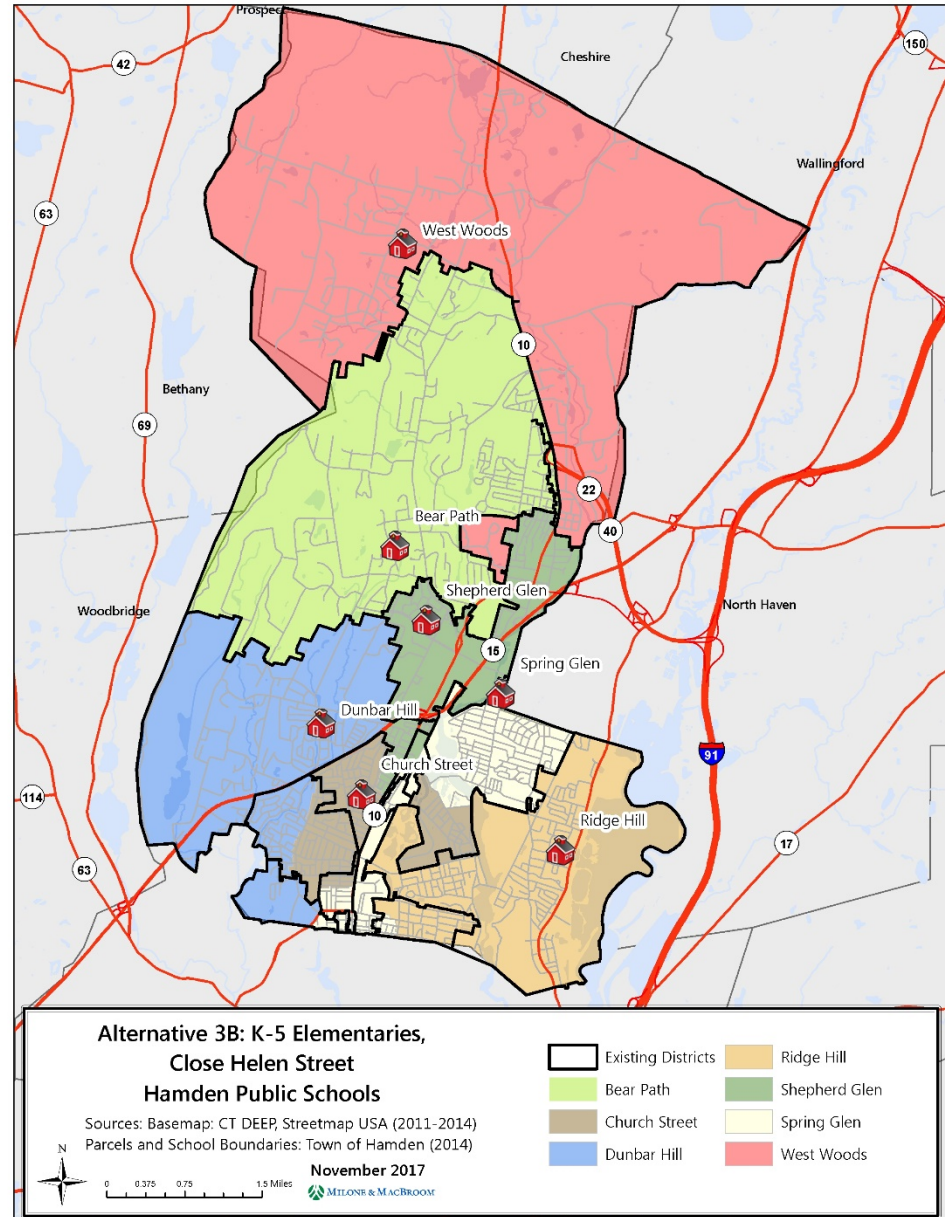
- Achieves relatively consistent and efficient (92-99%) utilization of seat capacity across schools
 - Church Street an exception at 119%; could be reduced by reallocation of districtwide programming
- No schools in imbalance/impending imbalance
- Districtwide surplus of approximately 120 seats relative to target utilization

Alternative 2: Considerations

- Feasible option for near-term implementation
- Requires architectural study of Hamden Middle School Building and Site for inclusion of 6th grade program
 - Current Enrollment for Grades 6th-8th - 1,295
 - CT State Dept. of Ed.(CSDE) EDO50 Building Capacity - 1,270
- Impacts all HPS elementary buildings and close to half of HPS K-5 students
- Geographically larger south Hamden districts likely to reduce year-to-year variation in enrollment and demographics
- Smaller margin for accommodating future growth in K-5 population with 6 school elementary model

Alternative 3B

- Alternative 3B:
6th grade to
middle school,
close Helen Street
- Would require
redistricting
approximately
700 (30%) K-5
students



Alternative 3B

School	Total K-5	K-5 Minority	% Minority	Absolute Imbalance	Planning Capacity	Utilization	Surplus/ Deficit
Bear Path	356	157	44.1%	17.6%*	429	83.0%	+73
Church Street	394	288	73.1%	11.4%	345	114.2%	-49
Dunbar Hill	260	191	73.5%	11.8%	312	83.3%	+52
Helen Street	0	0	N/A	N/A	0	N/A	N/A
Ridge Hill	321	233	72.6%	10.9%	371	86.5%	+50
Shepherd Glen	281	212	75.4%	13.8%	371	75.7%	+90
Spring Glen	373	183	49.1%	12.6%	449	83.1%	+76
West Woods	295	142	48.1%	13.5%	410	72.0%	+115
Total	2280	1406	61.7%	0.0%	2687	84.9%	+407

*Total K-5 count of 2280 students excludes 52 records (unplaceable, out of district, APEC); * Diversity school status under CGS 10-266e*

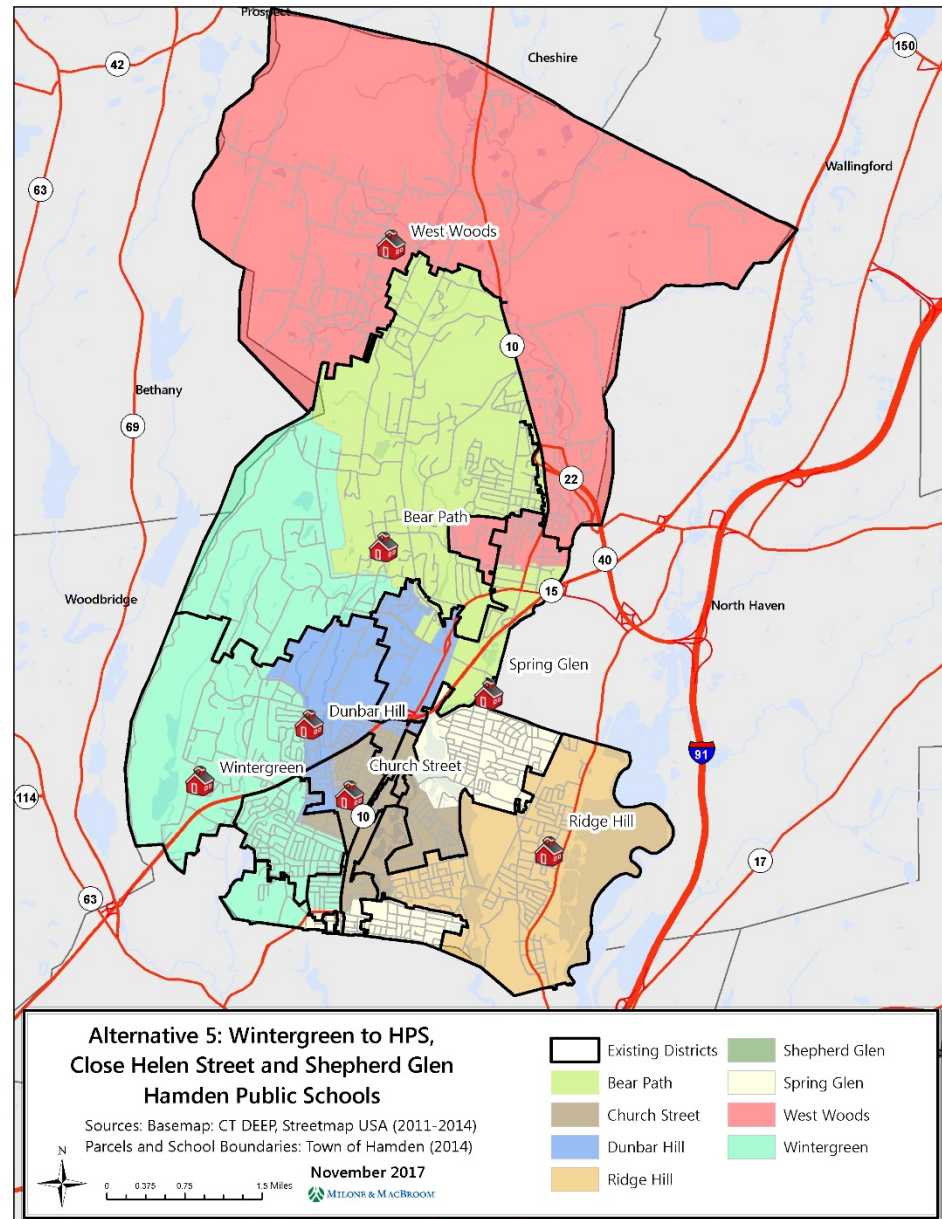
- Greater between-building variation than Alt. 2 in utilization (76% to 92%)
 - Church Street an exception at 114%; could be reduced by reallocation of districtwide programming
- No schools in imbalance/impending imbalance
- District retains significant excess K-5 capacity (~490 seats relative to target utilization)

Alternative 3B: Considerations

- Feasible option for near-term implementation
- No impacts to West Woods & Bear Path attendance zones (these schools remain somewhat underutilized); 30% of K-5 students impacted
- Achieves more stable south Hamden districts than Alt. 3A and reduces extent of 'satellite' attendance zones
- Retains greater flexibility in adapting to future changes in enrollment

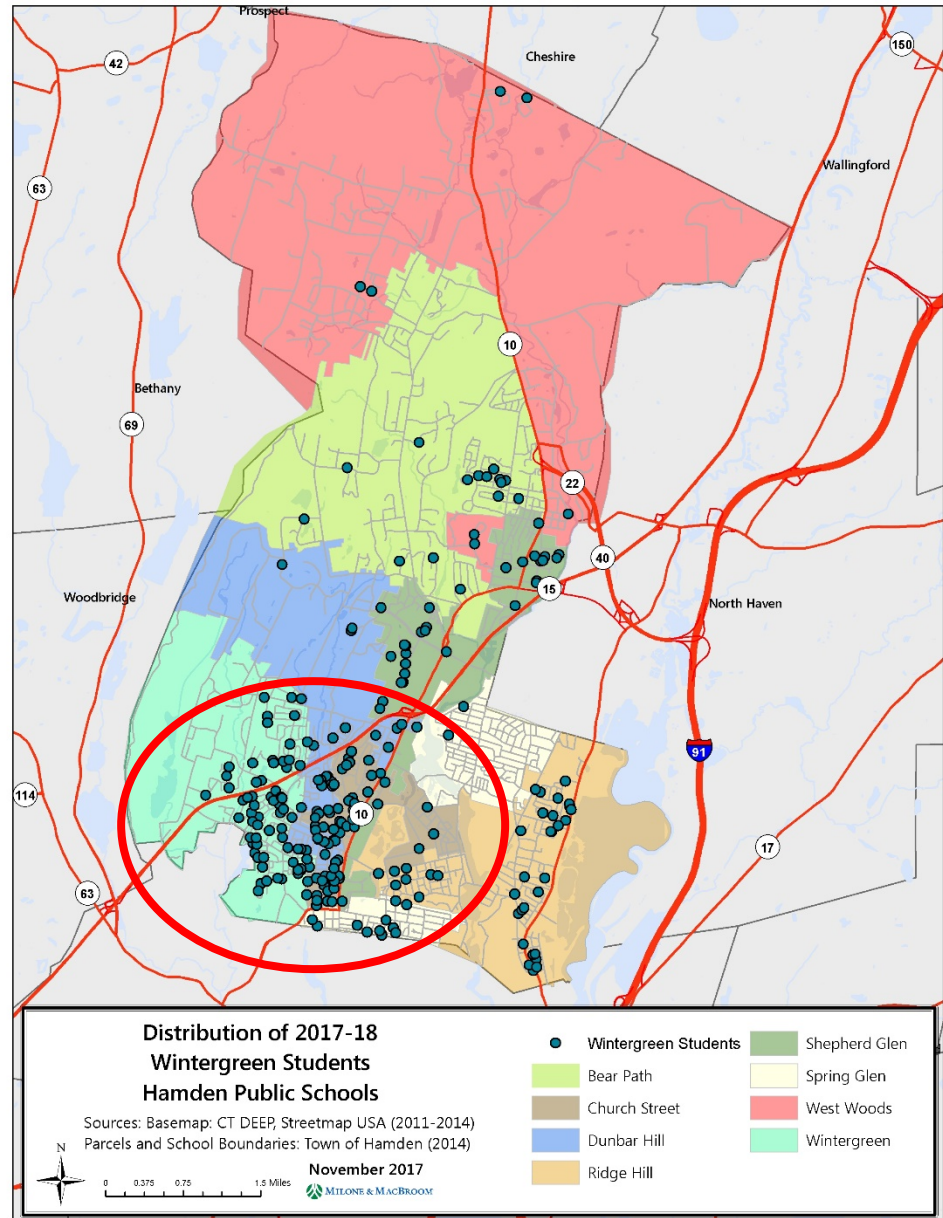
Alternative 5

- Alternative 5: incorporate Wintergreen as HPS K-6, close Helen Street and Shepherd Glen
- Wintergreen operates as neighborhood school
- Would require redistricting approximately 1,250 (42%) K-6 students



Wintergreen Students

- Approximately 319 existing Wintergreen students (K-8) reside in Hamden
- About two-thirds of Wintergreen students are located in south Hamden



Alternative 5

School	Total K-6	K-6 Minority	% Minority	Absolute Imbalance	Planning Capacity	Utilization	Surplus/ Deficit
Bear Path	429	217	50.6%	11.8%	429	100.0%	+0
Church Street	390	277	71.0%	8.7%	345	113.0%	-45
Dunbar Hill	291	212	72.9%	10.5%	312	93.3%	+21
Helen Street	0	0	N/A	N/A	0	N/A	N/A
Ridge Hill	366	261	71.3%	8.9%	371	98.7%	+5
Shepherd Glen	0	0	N/A	N/A	0	N/A	N/A
Spring Glen	430	197	45.8%	16.6%*	449	95.8%	+19
West Woods	394	182	46.2%	16.2%*	410	96.1%	+16
Wintergreen	663	502	75.7%	13.3%	630	105.2%	-33
Total	2963	1848	62.4%	0.0%	2946	100.6%	-17

Total K-6 count of 2963 students excludes 60 records (unplaceable, out of district, APEC) and includes 276 Wintergreen students

** Diversity school status under CGS 10-266e*

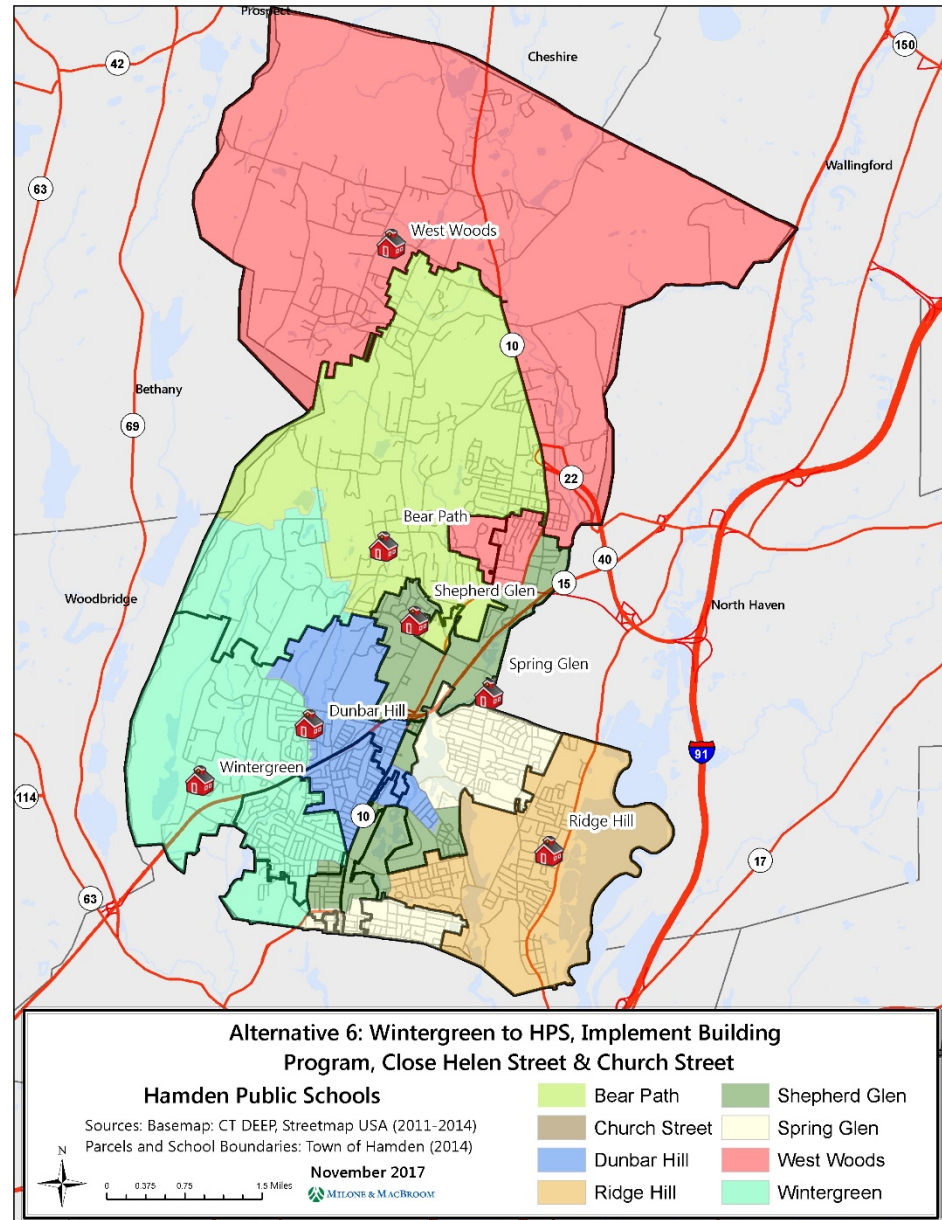
- Consistently high utilization (93-105%) between elementary buildings
 - Church Street an exception at 114%; would be reduced by reallocation of districtwide programming
- High utilization at Wintergreen projected to decline by time of implementation
- No schools in imbalance/impending imbalance

Alternative 5: Considerations

- Feasible option for longer-term implementation
- Impacts all HPS elementary buildings; close to half of HPS K-6 students impacted
- Geographically larger south Hamden districts likely to increase stability
- Implementation of Wintergreen as K-6 program requires transition period
- Little or no margin for accommodating future growth in K-6 population should enrollment trends reverse in the long term

Alternative 6

- Alternative 6: implement building program; incorporate Wintergreen as HPS K-6; close Helen Street and Church Street
- Wintergreen operates as neighborhood school only
- Would require redistricting approximately 1,150 (39%) HPS K-6 students



Alternative 6

School	Total K-6	K-6 Minority	% Minority	Absolute Imbalance	Planning Capacity	Utilization	Surplus/ Deficit
Bear Path	425	206	48.5%	13.2%	429	99.1%	+4
Church Street	0	0	N/A	N/A	0	N/A	N/A
Dunbar Hill	310	225	72.6%	10.9%	312	99.4%	+2
Helen Street	0	0	N/A	N/A	0	N/A	N/A
Ridge Hill	368	263	71.5%	9.8%	371	99.2%	+3
Shepherd Glen	458	334	72.9%	11.2%	475	96.4%	+17
Spring Glen	434	201	46.3%	15.4%*	449	96.7%	+15
West Woods	391	189	48.3%	13.4%	429	91.1%	+38
Wintergreen	577	432	74.9%	13.2%	630	91.6%	+53
Total	2963	1850	62.4%	0.0%	3095	95.7%	+132

*Total K-6 count of 3006 students excludes 60 records (unplaceable, out of district, APEC) and includes 276 current Wintergreen students; * Diversity school status under CGS 10-266e*

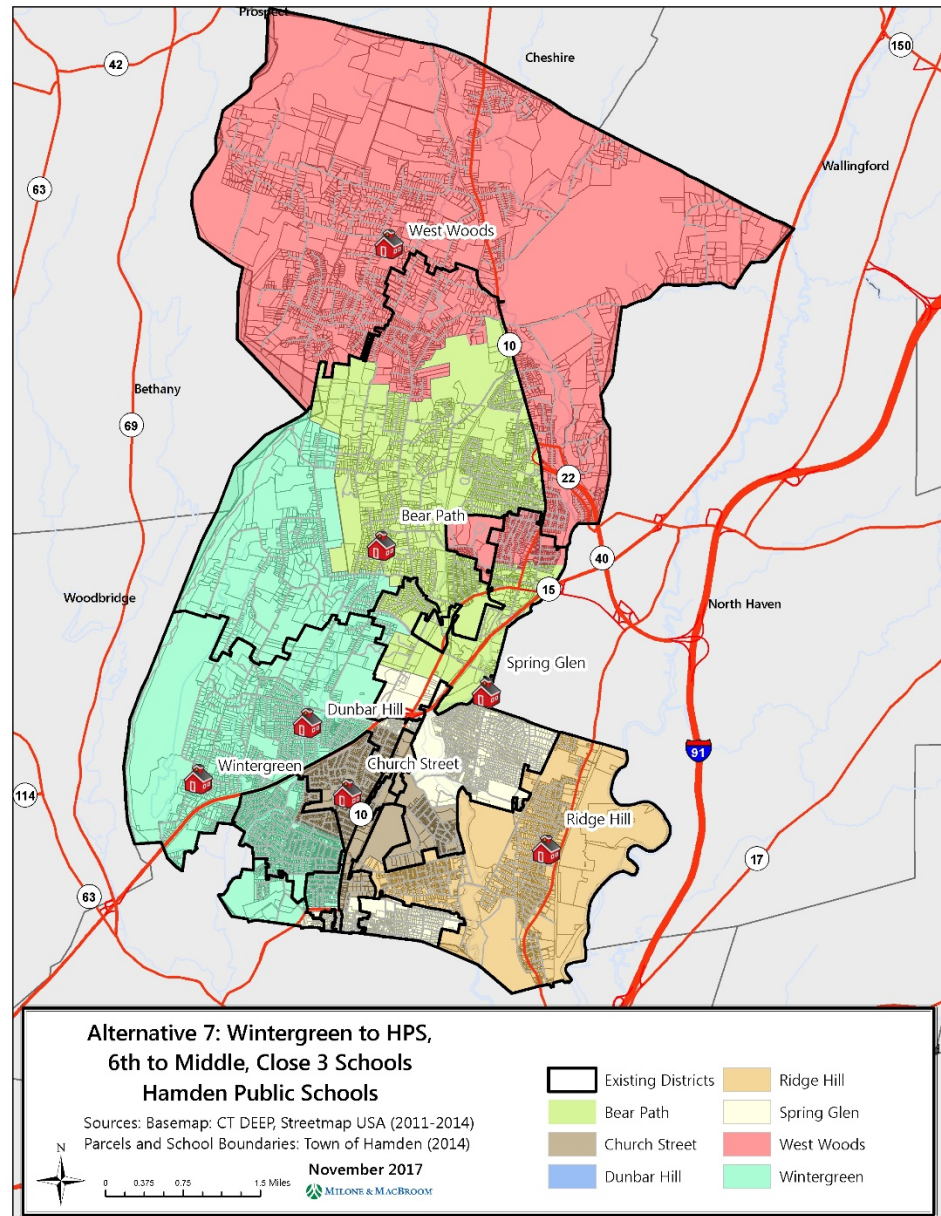
- Enrollment/Utilization calculated **including current Hamden resident Wintergreen students K-6 (276). Assumes return to HPS.**
- All schools well utilized; anticipated enrollment decline will likely reduce utilization below high 90% range before plan is implemented
- No schools in imbalance/impending imbalance
- Excess K-6 capacity of ~130 seats limits flexibility, however, as enrollment declines option becomes more viable

Alternative 6: Considerations

- Feasible option for longer-term implementation
- Impacts all HPS elementary buildings; close to half of HPS K-6 students impacted
- Geographically larger districts likely to increase stability, but also increase travel times
- Implementation of Wintergreen as K-6 program requires considerable transition period
- Small margin for accommodating any future growth in K-6 population

Alternative 7

- Alternative 7: implement building program for West Woods; incorporate Wintergreen as HPS K-5; 6th Grade Moves to the Middle School; close Helen Street, Shepherd Glenn & Dunbar Hill
- Wintergreen operates as neighborhood school
- Would require redistricting approximately 1,175 HPS students (40%)



Alternative 7

School	Total K-5	K-5 Minority	% Minority	Absolute Imbalance	Planning Capacity	Utilization	Surplus/ Deficit
Bear Path	420	241	57.4%	4.5%	429	97.9%	+9
Church Street	340	237	69.7%	7.9%	345	98.6%	+5
Dunbar Hill	0	0	N/A	N/A	0	N/A	N/A
Helen Street	0	0	N/A	N/A	0	N/A	N/A
Ridge Hill	329	227	69.0%	7.1%	371	88.7%	+42
Shepherd Glen	0	0	N/A	N/A	0	N/A	N/A
Spring Glen	435	222	51.0%	10.8%	449	96.9%	+14
West Woods	388	186	47.9%	13.9%	410	94.6%	+22
Wintergreen	623	467	75.0%	13.1%	630	98.9%	+7
Total	2535	1568	61.9%	0.0%	2634	96.2%	+99

Total K-5 count of 2535 students excludes 27 records (unplaceable, out of district, APEC) and includes 230 current K-5 Wintergreen students

- Enrollment/Utilization calculated **including current Hamden resident Wintergreen K-5 students (230). Assumes return to HPS.**
- All schools well utilized; anticipated enrollment decline will likely reduce utilization below high 90% range before plan is implemented
- No schools in imbalance/impending imbalance
- Excess K-6 capacity of ~100 seats limits initial flexibility, however, as enrollment declines option becomes more viable

Alternative 7: Considerations

- Feasible option for longer-term implementation
- Impacts all HPS elementary buildings; half of HPS K-5 students impacted
- Geographically larger districts likely to increase stability, but also increase travel times
- Implementation of Wintergreen as K-5 program requires considerable transition period
- Small margin for accommodating any future growth in K-5 population

Summary Matrix

Scenario	Grade Configuration	School Closures	Building Projects	Wintergreen Ownership	Racial Balance	Students Moved	Implementation Timeline
1A	K-6/7-8	None	Shepherd Glen, West Woods	None	Imbalance	None	Near-Term
1B	K-6/7-8	Helen Street	Shepherd Glen, West Woods	None	Balanced	850 students	Mid-Term
2	K-5/6-8	Shepherd Glen, Helen Street	None	None	Balanced	1,050 students	Near-Term
3A	K-5/6-8	Shepherd Glen	None	None	Pending Imbalance	625 students	Eliminated
3B	K-5/6-8	Helen Street	None	None	Balanced	700 students	Near-Term
4	K-6/7-8	Helen Street	None	Wintergreen to HPS	Balanced	925 students	Eliminated
5	K-6/7-8	Shepherd Glen, Helen Street	None	Wintergreen to HPS	Balanced	1,250 students	Long-Term
6	K-6/7-8	Helen Street, Church Street	Shepherd Glen, West Woods	Wintergreen to HPS	Balanced	1,150 HPS + 180 Hamden resident Wintergreen students	Long-Term
7	K-5/6-8	Dunbar Hill, Helen Street, Shepherd Glen	West Woods	Wintergreen to HPS	Balanced	1,175 HPS + 135 Hamden resident Wintergreen students	Long-Term

Discussion

